



 **Wagonway**

Product
Catalog



Meet Wagonway

We're improving multifamily product supply by providing direct access to buy the most popular multifamily interior products from our qualified suppliers.

Why Wagonway?

We deliver **high-quality products** at the **best possible prices**.

Excellent Customer Service

Wagonway's is committed to excellent customer service. We assign account managers to every customer and have an attractive loyalty program - **earn rewards with every purchase**.

High Quality Products

All products meet or exceed our strict quality control practices, industry safety requirements, and energy efficiency standards.

Best-In-Class Warranty

Lifetime warranty on critical product components and, in the unlikely event of a product failure, we have a hassle-free claims process.

Incredible Convenience

All Wagonway's products are clearly showcased online. **Setting up an online account is easy** and will allow you to see all product specifications, availability, pricing, and the minimum order requirements. Visit www.wagonway.com to sign-up today.

Attractive Payment Terms

Wagonway also provide attractive payment terms to qualified customers.

Wagonway is the **smart choice** when it comes to multifamily product supply.



For more information, visit us at www.wagonway.com

Our Product Lines

Wagonway is constantly developing and expanding the product offering. Our goal is to satisfy our clients needs by offering a vast selections of high quality products at the lowest possible price.

This Catalogue

We have put together this catalogue with ease of use in mind. All you have to do is click on a section (see below) and it will automatically take you to the first page of your desired section.

Wagonway is continuously updating and expanding our product offering. This catalogue is updated regularly and when you sign-up for an online account we will keep you fully updated via email when the catalogue has been updated with new product lines.



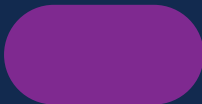
Ceiling Fans



Lighting Fixtures



Granite Countertops



Quartz Countertops



LVP Flooring



Mirrors



Ceiling Fans

[Click here to get
back to index](#)



MODEL NUMBER:
CF-521001-LED-10 (BRUSHED NICKEL)
CF-521001-LED-20 (OIL RUBBED BRONZE)
CF-521001-LED-30 (WHITE)
CF-521001-LED-40 (BLACK)

52 in. Breezium Ceiling Fan



- 52 in. Sweep 4 Blades
- 153 mm X 18 mm Silicon Steel Motor
- 10.5 degree Blade Pitch
- Triple Capacitor, Dry Location
- Compliant with DOE and CEC Energy Efficiency Regulations
- 3-Speed Reversible Direction
- Single-Unit Housing with LED Light Kit
- 19 Watt Dimmable Soft White Light (3,000K)
- Limited Lifetime Warranty (Fan Motor Only)

SPECIFICATIONS

ITEM NUMBER	CF-521001-LED-XX
FINISH	Brushed Nickel, Oil Rubbed Bronze, White, Black
CATEGORY	Ceiling Fan
INDOOR/OUTDOOR	Indoor
BLADE MATERIAL	Plywood
BLADE FINISH OPTIONS	Chrome, Rosewood, Black Gloss/Rosewood, Silver Oak/Rosewood, Black Forest/Rosewood
DIMENSIONS	52 in. x 15.7 in.
NUMBER OF BLADES	4
MOTOR SPECS	153 mm x 18 mm AC
CONTROLS	Pull Chain Switch
DOWN ROD	6 in.
LEAD WIRE	80 in.
BLADE PITCH	10.5 deg.
BLADES LOWEST POINT TO CEILING	12.6 in.
LIGHT KIT	LED Module
SHADE MATERIAL	Glass
SHADE DESCRIPTION	Frosted Opal Glass
NUMBER OF SHADES	1
SHADE DIMENSIONS	8.8 in. Dia. x 3.2 in Depth

PERFORMANCE

WATTAGE	19 W		
COLOR TEMP	3000K		
CRI	>90		
INITIAL LUMENS	1600lm		
DELIVERED LUMENS			
BULB/LED INCLUDED	Yes		
DIMMABLE	Yes		
OPERATING VOLTAGE	120V, 60Hz		
HARDWARE FINISH OPTIONS	Brown, White, Black, Grey		
LABELS	ETL Dry Location Listed		
	LOW	MEDIUM	HIGH
RPM	74-79	118-121	198-206
AMPS	0.21	0.36	0.52
WATTS	10.55	29.3	62.79
AVERAGE AIRFLOW (CFM AVE.)	3969		
AIRFLOW EFFICIENCY (CFM/W)	104		



MODEL NUMBER:
CF-521005-LED-10 (BRUSHED NICKEL)
CF-521005-LED-20 (OIL RUBBED BRONZE)
CF-521005-LED-30 (WHITE)
CF-521005-LED-40 (BLACK)

52 in. Classique Ceiling Fan



- 52 in. Sweep 5 Blades
- 153 mm X 13 mm Silicon Steel Motor
- 12 degree Blade Pitch
- Triple Capacitor, Dry Location
- Compliant with DOE and CEC Energy Efficiency Regulations
- 3 Dimmable LED Bulbs (3000K)
- 3-Speed Reversible Direction
- Integral Light Kit
- Limited Lifetime Warranty (Fan Motor Only)

SPECIFICATIONS

ITEM NUMBER	CF-521005-LED-XX
FINISH	Brushed Nickel, Oil Rubbed Bronze, White, Black
CATEGORY	Ceiling Fan
INDOOR/OUTDOOR	Indoor
BLADE MATERIAL	MDF
BLADE FINISH OPTIONS	Chrome, Rosewood, Black Gloss/Rosewood, Silver Oak/Rosewood, Black Forest/Rosewood
DIMENSIONS	52 in. x 19.5 in.
NUMBER OF BLADES	5
MOTOR SPECS	153 mm x 13 mm AC
CONTROLS	Pull Chain Switch
DOWN ROD	6 in.
LEAD WIRE	80 in.
BLADE PITCH	12 deg.
BLADES LOWEST POINT TO CEILING	12.6 in.
LIGHT KIT	E26 x 3
SHADE MATERIAL	Glass
SHADE DESCRIPTION	Alabaster Bell Glass
NUMBER OF SHADES	3
SHADE DIMENSIONS	4.7 in. Dia. x 4.4 in Depth

PERFORMANCE

WATTAGE	A15, 7 W x 3		
COLOR TEMP	3000K		
CRI	>80		
INITIAL LUMENS	600lm		
DELIVERED LUMENS			
BULB/LED INCLUDED	Yes		
DIMMABLE	No		
OPERATING VOLTAGE	120V, 60Hz		
HARDWARE FINISH OPTIONS	ORB, White, Black, ST		
LABELS	ETL Dry Location Listed		
	LOW	MEDIUM	HIGH
RPM	72-75	114-123	170-175
AMPS	0.21	0.36	0.5
WATTS	10.4	28.1	59.57
AVERAGE AIRFLOW (CFM AVE.)	3370		
AIRFLOW EFFICIENCY (CFM/W)	92		



MODEL NUMBER:
CF-521012-LED-10 (BRUSHED NICKEL)
CF-521012-LED-20 (OIL RUBBED BRONZE)
CF-521012-LED-30 (WHITE)
CF-521012-LED-40 (BLACK)

52 in. Classique Plus Ceiling Fan



- 52 in. Sweep 5 Blades
- 153 mm X 16 mm Silicon Steel Motor
- 12 degree Blade Pitch
- Triple Capacitor, Dry Location
- 3 x 9.5 Watt LED Dimmable Bulbs
- 810 Lumen LEDs
- Compliant with DOE and CEC Energy Efficiency Regulations
- Limited Lifetime Warranty (Fan Motor Only)

SPECIFICATIONS

ITEM NUMBER	CF-521012-LED-XX
FINISH	Brushed Nickel, Oil Rubbed Bronze, White, Black
CATEGORY	Ceiling Fan
INDOOR/OUTDOOR	Indoor
BLADE MATERIAL	MDF
BLADE FINISH OPTIONS	Chrome, Rosewood, Black Gloss / Rosewood, Silver Oak / Rosewood, Black Forest / Rosewood
DIMENSIONS	52 in. x 17.6 in.
NUMBER OF BLADES	5
MOTOR SPECS	153 mm x 13 mm AC
CONTROLS	Pull Chain Switch
DOWN ROD	4.5 in.
LEAD WIRE	80 in.
BLADE PITCH	12.5 deg.
BLADES LOWEST POINT TO CEILING	11.42 in.
LIGHT KIT	E26 x 3
SHADE MATERIAL	Glass
SHADE DESCRIPTION	Alabaster Bell Glass
NUMBER OF SHADES	3
SHADE DIMENSIONS	4.7 in. Dia. x 4.4 in Depth

PERFORMANCE

WATTAGE	9.5 W x 3		
COLOR TEMP	3000K		
CRI	≥90		
INITIAL LUMENS	800lm		
DELIVERED LUMENS			
BULB/LED INCLUDED	Yes		
DIMMABLE	Yes		
OPERATING VOLTAGE	120V, 60Hz		
HARDWARE FINISH OPTIONS	ORB, White, Black, ST		
LABELS	ETL Dry Location Listed		
	LOW	MEDIUM	HIGH
RPM	72-76	120-127	182-190
AMPS	0.21	0.35	0.5
WATTS	10.32	28	60.21
AVERAGE AIRFLOW (CFM AVE.)	3559		
AIRFLOW EFFICIENCY (CFM/W)	97		



MODEL NUMBER:
CF-521010-LED-10 (BRUSHED NICKEL)
CF-521010-LED-20 (OIL RUBBED BRONZE)
CF-521010-LED-30 (WHITE)
CF-521010-LED-40 (BLACK)

52 in. Masterwind Ceiling Fan



- 52 in. Sweep 5 Blades
- 153 mm X 16 mm Silicon Steel Motor
- 12 degree Blade Pitch
- Triple Capacitor, Dry Location
- 3-Speed reversible direction
- 19 Watt Dimmable LED Light
- Compliant with DOE and CEC Energy Efficiency Regulations
- Limited Lifetime Warranty (Fan Motor Only)

SPECIFICATIONS

ITEM NUMBER	CF-521010-LED-XX
FINISH	Brushed Nickel, Oil Rubbed Bronze, White, Black
CATEGORY	Ceiling Fan
INDOOR/OUTDOOR	Indoor
BLADE MATERIAL	MDF
BLADE FINISH OPTIONS	Chrome, Rosewood, Black Gloss/Rosewood, Silver Oak/Rosewood, Black Forest/Rosewood
DIMENSIONS	52 in. x 17.5 in.
NUMBER OF BLADES	5
MOTOR SPECS	153 mm x 16 mm AC
CONTROLS	Pull Chain Switch
DOWN ROD	4.5 in.
LEAD WIRE	80 in.
BLADE PITCH	12 deg.
BLADES LOWEST POINT TO CEILING	12.01 in.
LIGHT KIT	JLED Module
SHADE MATERIAL	Glass
SHADE DESCRIPTION	Alabaster Glass
NUMBER OF SHADES	1
SHADE DIMENSIONS	7.8 in. Dia. x 3.3 in Depth

PERFORMANCE

WATTAGE	19 W		
COLOR TEMP	3000K		
CRI	≥90		
INITIAL LUMENS	1600lm		
DELIVERED LUMENS	1300lm		
BULB/LED INCLUDED	Yes		
DIMMABLE	Yes		
OPERATING VOLTAGE	120V, 60Hz		
HARDWARE FINISH OPTIONS	ORB, White, Black, ST		
LABELS	ETL Dry Location Listed		
	LOW	MEDIUM	HIGH
RPM	68-72	112-116	171-179
AMPS	0.21	0.35	0.5
WATTS	10.52	27.8	59.82
AVERAGE AIRFLOW (CFM AVE.)	3265		
AIRFLOW EFFICIENCY (CFM/W)	89		



MODEL NUMBER:
CF-521014-LED-10 (BRUSHED NICKEL)
CF-521014-LED-20 (OIL RUBBED BRONZE)
CF-521014-LED-30 (WHITE)
CF-521014-LED-40 (BLACK)

52 in. Nuwave Ceiling Fan



- 52 in. Sweep 3 ABS Blades
- 153 mm X 18 mm Silicon Steel Motor
- 13 degree Blade Pitch
- Triple Capacitor, Dry Location
- Remote Control
- 19 Watt Soft-White Dimmable LED Light
- Compliant with DOE and CEC Energy Efficiency Regulations
- Limited Lifetime Warranty (Fan Motor Only)
- Modern Style

SPECIFICATIONS

ITEM NUMBER	CF-521014-LED-XX
FINISH	Brushed Nickel, Oil Rubbed Bronze, White, Black
CATEGORY	Ceiling Fan
INDOOR/OUTDOOR	Indoor
BLADE MATERIAL	ABS
BLADE FINISH OPTIONS	Chrome, Rosewood, Black Gloss/Rosewood, Silver Oak/Rosewood, Black Forest/Rosewood
DIMENSIONS	52 in. x 18 in.
NUMBER OF BLADES	3
MOTOR SPECS	153 mm x 18 mm AC
CONTROLS	Remote Control
DOWN ROD	6 in.
LEAD WIRE	80 in.
BLADE PITCH	12 deg.
BLADES LOWEST POINT TO CEILING	15.63 in.
LIGHT KIT	LED Module
SHADE MATERIAL	Glass
SHADE DESCRIPTION	Frosted Opal Glass
NUMBER OF SHADES	1
SHADE DIMENSIONS	6.6 in. Dia. x 1.8 in Depth

PERFORMANCE

WATTAGE	19 W		
COLOR TEMP	3000K		
CRI	≥90		
INITIAL LUMENS	1600lm		
DELIVERED LUMENS	1300lm		
BULB/LED INCLUDED	Yes		
DIMMABLE	Yes		
OPERATING VOLTAGE	120V, 60Hz		
HARDWARE FINISH OPTIONS	ST/CH		
LABELS	ETL Dry Location Listed		
	LOW	MEDIUM	HIGH
RPM	73-81	133	186-194
AMPS	0.22	0.34	0.5
WATTS	11.43	26.8	59.97
AVERAGE AIRFLOW (CFM AVE.)			3841
AIRFLOW EFFICIENCY (CFM/W)			101



MODEL NUMBER:
CF-521006-LED-10 (BRUSHED NICKEL)
CF-521006-LED-20 (OIL RUBBED BRONZE)
CF-521006-LED-30 (WHITE)
CF-521006-LED-40 (BLACK)

52 in. Tradition Ceiling Fan



- 52 in. Sweep 5 Blades
- 153 mm X 16 mm Silicon Steel Motor
- 12 degree Blade Pitch
- Triple Capacitor, Dry Location
- 3-Speed Reversible Direction
- 3 LED 9.5 Watt Dimmable Bulbs
- Compliant with DOE and CEC Energy Efficiency Regulations
- Limited Lifetime Warranty (Fan Motor Only)

SPECIFICATIONS

ITEM NUMBER	CF-521006-LED-XX
FINISH	Brushed Nickel, Oil Rubbed Bronze, White Black
CATEGORY	Ceiling Fan
INDOOR/OUTDOOR	Indoor
BLADE MATERIAL	MDF
BLADE FINISH OPTIONS	Chrome, Rosewood, Black Gloss/Rosewood, Silver Oak/Rosewood, Black Forest/Rosewood
DIMENSIONS	52 in. x 19 in.
NUMBER OF BLADES	5
MOTOR SPECS	153 mm x 16 mm AC
CONTROLS	Pull Chain Switch
DOWN ROD	4.5 in.
LEAD WIRE	80 in.
BLADE PITCH	12 deg.
BLADES LOWEST POINT TO CEILING	11.61 in.
LIGHT KIT	E26 x 3
SHADE MATERIAL	Glass
SHADE DESCRIPTION	Clear Glass
NUMBER OF SHADES	1
SHADE DIMENSIONS	12 in. Dia. x 3.9 in Depth

PERFORMANCE

WATTAGE	9.5 W x 3		
COLOR TEMP	3000K		
CRI	≥90		
INITIAL LUMENS	800lm		
DELIVERED LUMENS			
BULB/LED INCLUDED	Yes		
DIMMABLE	Yes		
OPERATING VOLTAGE	120V, 60Hz		
HARDWARE FINISH OPTIONS	ORB, White, Black, ST		
LABELS	ETL Dry Location Listed		
	LOW	MEDIUM	HIGH
RPM	65-69	119-127	176-185
AMPS	0.21	0.35	0.5
WATTS	10.7	28.5	59.6
AVERAGE AIRFLOW (CFM AVE.)	3400		
AIRFLOW EFFICIENCY (CFM/W)	98		



MODEL NUMBER:
CF-521011-LED-10-A-06 CF-521011-LED-10
(BRUSHED NICKEL)
CF-521011-LED-20 (OIL RUBBED BRONZE)
CF-521011-LED-30 (WHITE)
CF-521011-LED-40 (BLACK)

52 in. Tramontana Ceiling Fan

With “Quick Connect” blade installation feature.



- 52 in. Sweep 5 Blades
- 153 mm X 13 mm Silicon Steel Motor
- 12 degree Blade Pitch
- Triple Capacitor, Dry Location
- Frosted White Glass Dome
- 3 LED 9 Watt Soft-White Bulbs
- Compliant with DOE and CEC Energy Efficiency Regulations
- Limited Lifetime Warranty (Fan Motor Only)
- Classic Look Ceiling Mount

SPECIFICATIONS

ITEM NUMBER	CF-521011-LED-XX
FINISH	Brushed Nickel, Oil Rubbed Bronze, White, Black
CATEGORY	Ceiling Fan
INDOOR/OUTDOOR	Indoor
BLADE MATERIAL	MDF
BLADE FINISH OPTIONS	Chrome, Rosewood, Black Gloss/Rosewood, Silver Oak/Rosewood, Black Forest/Rosewood
DIMENSIONS	52 in. x 18.88 in.
NUMBER OF BLADES	5
MOTOR SPECS	153 mm x 13 mm AC
CONTROLS	Pull Chain Switch
DOWN ROD	4.5 in.
LEAD WIRE	80 in.
BLADE PITCH	12 deg.
BLADES LOWEST POINT TO CEILING	13 in.
LIGHT KIT	E26 x 3
SHADE MATERIAL	Glass
SHADE DESCRIPTION	Frosted Opal Glass
NUMBER OF SHADES	1
SHADE DIMENSIONS	12 in. Dia. x 3.9 in Depth

PERFORMANCE

WATTAGE	9.5 W x 3		
COLOR TEMP	3000K		
CRI	≥90		
INITIAL LUMENS	800lm		
DELIVERED LUMENS			
BULB/LED INCLUDED	Yes		
DIMMABLE	No		
OPERATING VOLTAGE	120V, 60Hz		
HARDWARE FINISH OPTIONS	ORB, White, Black, ST		
LABELS	ETL Dry Location Listed		
	LOW	MEDIUM	HIGH
RPM	64-68	115-128	174-180
AMPS	0.22	0.35	0.51
WATTS	10.54	28.5	60.8
AVERAGE AIRFLOW (CFM AVE.)	3280		
AIRFLOW EFFICIENCY (CFM/W)	88		



MODEL NUMBER:
CF-521002-LED-10 (BRUSHED NICKEL)
CF-521002-LED-20 (OIL RUBBED BRONZE)
CF-521002-LED-30 (WHITE)
CF-521002-LED-40 (BLACK)

52 in. Windsome Ceiling Fan



- 52 in. Sweep 5 Blades
- 188 mm X 15 mm Silicon Steel Motor
- 13 degree Blade Pitch
- Triple Capacitor, Dry Location
- 3-Speed Reversible Direction
- Single-Unit Housing with LED Light Kit
- 19 Watt Dimmable Soft-White Light (3,000K)
- Compliant with DOE and CEC Energy Efficiency Regulations
- Limited Lifetime Warranty (fan motor only)

SPECIFICATIONS

ITEM NUMBER	CF-521002-LED-XX
FINISH	Brushed Nickel, Oil Rubbed Bronze, White, Black
CATEGORY	Ceiling Fan
INDOOR/OUTDOOR	Indoor
BLADE MATERIAL	Plywood
BLADE FINISH OPTIONS	Chrome, Rosewood, Black Gloss/Rosewood, Silver Oak/Rosewood, Black Forest/Rosewood
DIMENSIONS	52 in. x 16.3 in.
NUMBER OF BLADES	5
MOTOR SPECS	188 mm x 15 mm AC
CONTROLS	Pull Chain Switch
DOWN ROD	6 in.
LEAD WIRE	80 in.
BLADE PITCH	13 deg.
BLADES LOWEST POINT TO CEILING	12.6 in.
LIGHT KIT	LED Module
SHADE MATERIAL	Glass
SHADE DESCRIPTION	Frosted Opal Glass
NUMBER OF SHADES	1
SHADE DIMENSIONS	10 in. Dia. x 3.1 in Depth

PERFORMANCE

WATTAGE	19 W		
COLOR TEMP	3000K		
CRI	≥90		
INITIAL LUMENS	1600lm		
DELIVERED LUMENS			
BULB/LED INCLUDED	Yes		
DIMMABLE	Yes		
OPERATING VOLTAGE	120V, 60Hz		
HARDWARE FINISH OPTIONS	ORB, White, Black, ST		
LABELS	ETL Dry Location Listed		
	LOW	MEDIUM	HIGH
RPM	57-63	109-115	163-172
AMPS	0.26	0.42	0.62
WATTS	12.56	34	73.90
AVERAGE AIRFLOW (CFM AVE.)	3970		
AIRFLOW EFFICIENCY (CFM/W)	88		



Lighting Fixtures

[Click here to get
back to index](#)



MODEL NUMBER:
LF-2012-BL-10 (BRUSHED NICKEL)
LF-2012-BL-20 (OIL RUBBED BRONZE)
LF-2012-BL-30 (BLACK)
LF-2012-BL-40 (WHITE)

20 in. Bedford 3-Light Pendant Fixture



- Brushed Nickel Finish
- Alabaster Glass
- Dimensions: 20 1/8-in. D x 22 7/8-in. H.

SPECIFICATIONS

DIMENSIONS	20 1/8" Diameter x 22 7/8" H
COLOR	Various with faux alabaster glass
EXTENSION	-
HEIGHT	22 7/8"
WIDTH	20 1/8" Diameter
GLASS SIZE	15 5/8" Diameter x 3 3/8" H
UL APPROVED	Yes
ENERGY STAR APPROVED	-

BULB TYPE	Incandescent (not included)
BULB BASE	E26/Medium
TEMPERATURE	-
DIMMABLE	No
VOLTAGE	120V
WATTS	3 x 60W
LED	No



MODEL NUMBER:
LF-2007-BL-10 (BRUSHED NICKEL)
LF-2007-BL-20 (OIL RUBBED BRONZE)
LF-2007-BL-30 (BLACK)
LF-2007-BL-40 (WHITE)

25 in. Boynton 3-Light Vanity Fixture



- Brushed Nickel Finish
- Double glass screens for a soft glow
- Dimensions: 25-in. W x 10 1/4-in. H x 7 1/2-in. E

SPECIFICATIONS

DIMENSIONS	25"W x 10 1/4"H x 7 1/2"E
COLOR	Various
EXTENSION	7 1/2"
HEIGHT	10 1/4"
WIDTH	25"
ECO FRIENDLY	No
ETL APPROVED	Yes
ENERGY STAR APPROVED	-

BULB TYPE	Incandescent (Not included)
BULB BASE	Medium Base
TEMPERATURE	-
DIMMABLE	No
VOLTAGE	120V
WATTS	3 x 60W
LED	No



MODEL NUMBER:
LF-2006-BL-10 (BRUSHED NICKEL)
LF-2006-BL-20 (OIL RUBBED BRONZE)
LF-2006-BL-30 (BLACK)
LF-2006-BL-40 (WHITE)

35 in. Boynton 4-Light Vanity Fixture



- Brushed Nickel Finish
- Double glass screens for a soft glow
- Dimensions: 34 3/4-in W x 10 1/4-in H x 7 1/2-in. E

SPECIFICATIONS

DIMENSIONS	34 3/4"W x 10 1/4"H x 7 1/2"E
COLOR	Various
EXTENSION	7 1/2"
HEIGHT	10 1/4"
WIDTH	34 3/4"
ECO FRIENDLY	No
ETL APPROVED	Yes
ENERGY STAR APPROVED	-

BULB TYPE	Incandescent (Not included)
BULB BASE	Medium Base
TEMPERATURE	-
DIMMABLE	No
VOLTAGE	120V
WATTS	4 x 60W
LED	No



MODEL NUMBER:
LF-2011-FL-10 (BRUSHED NICKEL)
LF-2011-FL-20 (OIL RUBBED BRONZE)
LF-2011-FL-30 (BLACK)
LF-2011-FL-40 (WHITE)

Ellipto Fluorescent Oval Light Fixture



- Brushed Nickel Finish
- 2 x 32 Watt T9 Circline Fluorescent Lamp (Included)
- 4100K Color Temperature Light
- Dimensions: 32 3/8-in. L x 18 1/8-in. W x 4 3/4-in D.

SPECIFICATIONS

DIMENSIONS	32 3/8"L x 18 1/8"W x 4 3/4"D
COLOR	Various with white opal acrylic lens
EXTENSION	4 3/4"
HEIGHT	32 3/8"
WIDTH	18 1/8"
ECO FRIENDLY	No
UL APPROVED	Yes
ENERGY STAR APPROVED	-

BULB TYPE	2 x 32 Watt T9 Circline 4100K Lamp (Included)
TEMPERATURE	4100K
LAMP LIFE	10,000h
DIMMABLE	No
VOLTAGE	120V
WATTS	2 x 32W
LED	No



MODEL NUMBER:
LF-2010-LED-10 (BRUSHED NICKEL)
LF-2010-LED-20 (OIL RUBBED BRONZE)
LF-2010-LED-30 (BLACK)
LF-2010-LED-40 (WHITE)

Ellipto LED Oval Light Fixture



- Brushed Nickel Finish
- 53 Watt LED Dimmable Lamp
- 4000K Color Temperature + 5100 Lumens
- 50,000 Hour Life Span
- Dimensions: 32 3/8-in. L x 18 1/8-in. W x 4 3/4-in D.

SPECIFICATIONS

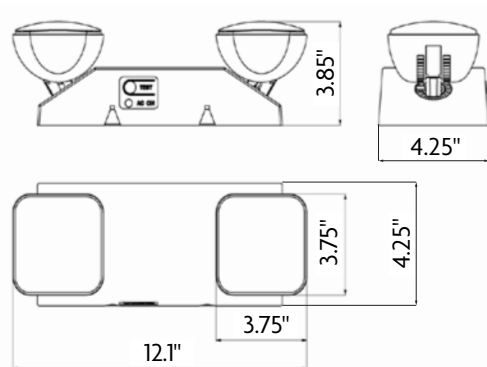
DIMENSIONS	18 1/8"W x 32 3/8"H x 4 3/4"D
COLOR	Various with white opal acrylic lens
EXTENSION	4 3/4"
HEIGHT	32 3/8"
WIDTH	18 1/8"
ECO FRIENDLY	No
ETL APPROVED	Yes
ENERGY STAR APPROVED	-

BULB TYPE	LED
LUMENS	5100
TEMPERATURE	4000K
LAMP LIFE	50,000h
DIMMABLE	0-10V Dimmable
VOLTAGE	120V
WATTS	53W
LED	Yes

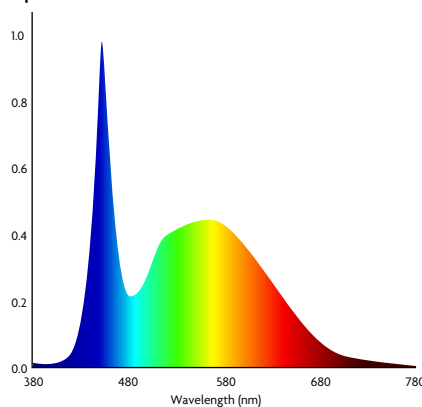
2-Head LED Emergency Light



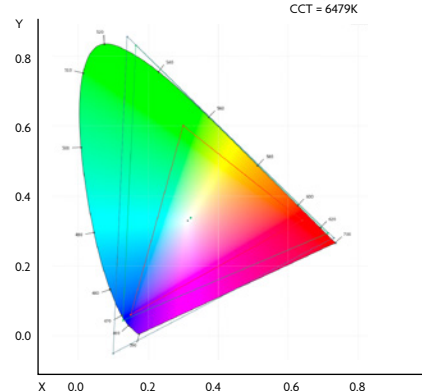
- Fully Adjustable Dual Head Fixture
- Rechargeable Battery
- 50,000 Hour Life Span
- Dimensions: 12-in. W x 4 1/4-in. H



Spectrum



CIE 1931 Everfine



SPECIFICATIONS

DIMENSIONS	12" W x 4 1/4"H
COLOR	White injection-molded thermoplastic ABS housing
MOUNT	Universal J-box mounting
BULB TYPE	LED
BRIGHTNESS	2 x 12 pcs Ultra Bright 2835 SMT LED lamp heads
COLOR TEMPERATURE	6000K
LUMINOUS FLUX	>=200lm
WATTS	2.4W Input. / 2.2W Output.

BATTERY	Built-in 3.6V1000mAh NiCad battery
MAX RECHARGE TIME	24 hrs
VOLTAGE	120V/227AC Dual Voltage
AC CHARGING CURRENT	AC 8-20mA; AC 4-15mA
DC CHARGING VOLTAGE	4.2V-4.6V
DISCHARGE TIME	minimum 90 min emergency operation
DISCHARGE CURRENT	350-500MA



MODEL NUMBER:
LF-2008-LED-30 (BLACK)
LF-2008-LED-40 (WHITE)

Lancaster LED Wall Fixture



- 9 Watt Integrated LED Lamp
- 4000K Color Temperature
- 50,000 Hour Life Span

SPECIFICATIONS

DIMENSIONS	7 3/4" W x 9 3/4" H x 4 1/4" E
COLOR	Various
EXTENSION	4 1/4"
HEIGHT	9 3/4"
WIDTH	7 3/4"
ECO FRIENDLY	Yes
ETL APPROVED	Yes
ENERGY STAR APPROVED	-

BULB TYPE	Integrated LED
LIGHT COLOR	Cool White
TEMPERATURE	4000K
DIMMABLE	No
VOLTAGE	120V
WATTS	9
LED	Yes



MODEL NUMBER:
LF-2003-LED-10 (BRUSHED NICKEL)
LF-2003-LED-20 (OIL RUBBED BRONZE)
LF-2003-LED-30 (BLACK)
LF-2003-LED-40 (WHITE)

10 in. Ovalisk LED Light Fixture



- Brushed Nickel Finish
- 16 Watt LED Dimmable Lamp
- 3000K Color Temperature + 1300 Lumens
- 50,000 Hour Life Span
- Shatter Resistant Acrylic Lens

SPECIFICATIONS

DIMENSIONS	10" Diameter x 3 3/8"E
COLOR	Various with etched white opal acrylic lens
EXTENSION	3 3/8"
HEIGHT	-
WIDTH	10" Diameter
ECO FRIENDLY	No
ETL APPROVED	Yes
ENERGY STAR APPROVED	-

BULB TYPE	Integrated LED
LUMENS	1300
TEMPERATURE	3000K
LAMP LIFE	50,000 hrs
CRI	80
DIMMABLE	Yes with Driver
VOLTAGE	120V
WATTS	16W
LED	Yes



MODEL NUMBER:
LF-2002-LED-10 (BRUSHED NICKEL)
LF-2002-LED-20 (OIL RUBBED BRONZE)
LF-2002-LED-30 (BLACK)
LF-2002-LED-40 (WHITE)

14 in. Ovalisk LED Light Fixture



- Brushed Nickel Finish
- 26 Watt LED Dimmable Lamp
- 4000K Color Temperature + 2000 Lumens
- 50,000 Hour Life Span
- Shatter Resistance Acrylic Lens

SPECIFICATIONS

DIMENSIONS	14" Diameter x 3 3/4"E
COLOR	Various with etched white opal acrylic lens
EXTENSION	3 3/4"
HEIGHT	-
WIDTH	14" Diameter
ECO FRIENDLY	No
ETL APPROVED	Yes
ENERGY STAR APPROVED	-

BULB TYPE	LED
LUMENS	2000
TEMPERATURE	4000K
LAMP LIFE	50,000 hrs
CRI	80
DIMMABLE	Yes
VOLTAGE	120V
WATTS	26W
LED	Yes



MODEL NUMBER:
LF-2001-LED-10 (BRUSHED NICKEL)
LF-2001-LED-20 (OIL RUBBED BRONZE)
LF-2001-LED-30 (BLACK)
LF-2001-LED-40 (WHITE)

16 in. Ovalisk LED Light Fixture



- Brushed Nickel Finish
- 32 Watt LED Dimmable Lamp
- 4000K Color Temperature + 2600 Lumens
- 50,000 Hour Life Span
- Shatter Resistant Acrylic Lens

SPECIFICATIONS

DIMENSIONS	16" Diameter x 4"E
COLOR	Various with etched white opal acrylic lens
EXTENSION	4"
HEIGHT	-
WIDTH	16" Diameter
ECO FRIENDLY	No
ETL APPROVED	Yes
ENERGY STAR APPROVED	-

BULB TYPE	LED
LUMENS	2600
TEMPERATURE	4000K
LAMP LIFE	50,000 hrs
CRI	80
DIMMABLE	Yes
VOLTAGE	120V
WATTS	32W
LED	Yes



MODEL NUMBER:
LF-2005-BL-10 (BRUSHED NICKEL)
LF-2005-BL-20 (OIL RUBBED BRONZE)
LF-2005-BL-30 (BLACK)
LF-2005-BL-40 (WHITE)

24 in. Waterbury 3-Light Vanity Fixture



- Brushed Nickel Finish
- ETL Certified
- Dimensions: 24-in. W x 7 7/8-in. H x 7 7/8-in. D.

SPECIFICATIONS

DIMENSIONS	24"W x 7 7/8"H x 7 7/8"E
COLOR	Various
EXTENSION	7 7/8"
HEIGHT	7 7/8"
WIDTH	24"
ECO FRIENDLY	No
ETL APPROVED	Yes
ENERGY STAR APPROVED	-

BULB TYPE	Incandescent (Not included)
BULB BASE	Medium Base
TEMPERATURE	-
DIMMABLE	No
VOLTAGE	120V
WATTS	3 x 100W
LED	No



MODEL NUMBER:
LF-2004-BL-10 (BRUSHED NICKEL)
LF-2004-BL-20 (OIL RUBBED BRONZE)
LF-2004-BL-30 (BLACK)
LF-2004-BL-40 (WHITE)

30 in. Waterbury 4-Light Vanity Fixture



- Brushed Nickel Finish
- ETL Certified
- Dimensions: 30-in. W x 7 7/8-in. H x 7 7/8-in. D.

SPECIFICATIONS

DIMENSIONS	30"W x 7 7/8"H x 7 7/8"E
COLOR	Various
EXTENSION	7 7/8"
HEIGHT	7 7/8"
WIDTH	30"
ECO FRIENDLY	No
ETL APPROVED	Yes
ENERGY STAR APPROVED	-

BULB TYPE	Incandescent (Not included)
BULB BASE	Medium Base
TEMPERATURE	-
DIMMABLE	No
VOLTAGE	120V
WATTS	4 x 100W
LED	No



Granite Countertops

[Click here to get
back to index](#)



Granite Countertops



COASTAL

The collection reflects an array of beige neutrals to mimic sandy beaches. This collection includes flecks to imitate the different types of sand that can be found throughout coastal regions.

DESCRIPTION

Wagonway Granite is finished with exceptional attention to detail. We offer slabs as well as pre-fabricated and fully-fabricated countertops for easy installation. Our granite manufacturing process utilizes the latest technology and adheres to the highest standards of quality control, ensuring that only the finest stone is installed in your space.

THICKNESS OPTIONS

Available in both 2-cm and 3-cm thickness options.

EDGING OPTIONS

Full Bullnose, Demi Bullnose, Eased, 1/4 Top & Bottom Round, Top Bevel, & Double Bevel.

INSTALLATION

Install in accordance with Wagonway Installation Instructions.

WARRANTY

Wagonway product warranty includes up to 7-year light commercial. Please visit www.wagonway.com for full warranty details.

LEAD TIME

The lead time is 90 days from order placement.



For more information, visit us at www.wagonway.com

AVAILABLE COLORS



2008 Sand Dune



2012 Driftwood White



2014 Black Sand



2006 Shoreline



Granite Countertops



MINIMALIST

This collection illustrates cosmopolitan living with its sophistication and classic hues. Pair this collection with softer colors and metal accents to create a welcoming atmosphere.

DESCRIPTION

Wagonway Granite is finished with exceptional attention to detail. We offer slabs as well as pre-fabricated and fully-fabricated countertops for easy installation. Our granite manufacturing process utilizes the latest technology and adheres to the highest standards of quality control, ensuring that only the finest stone is installed in your space.

THICKNESS OPTIONS

Available in both 2-cm and 3-cm thickness options.

EDGING OPTIONS

Full Bullnose, Demi Bullnose, Eased, 1/4 Top & Bottom Round, Top Bevel, & Double Bevel.

INSTALLATION

Install in accordance with Wagonway Installation Instructions.

WARRANTY

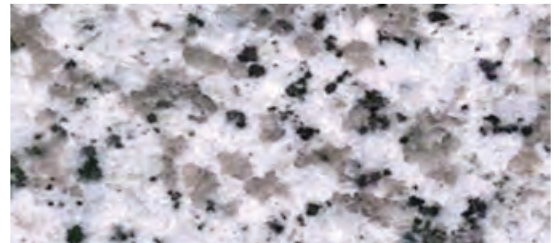
Wagonway product warranty includes up to 7-year light commercial. Please visit www.wagonway.com for full warranty details.

LEAD TIME

The lead time is 90 days from order placement.



AVAILABLE COLORS



2017 Cool White



2005 Hazel White



2002 Night White



2018 Smokey White

For more information, visit us at www.wagonway.com



Granite Countertops



RUSTIC

The collection is influenced by warm earthy tones that are found in the mountains. This collection embraces the subdued hues while providing an informal elegance with its simplicity.

DESCRIPTION

Wagonway Granite is finished with exceptional attention to detail. We offer slabs as well as pre-fabricated and fully-fabricated countertops for easy installation. Our granite manufacturing process utilizes the latest technology and adheres to the highest standards of quality control, ensuring that only the finest stone is installed in your space.

THICKNESS OPTIONS

Available in both 2-cm and 3-cm thickness options.

EDGING OPTIONS

Full Bullnose, Demi Bullnose, Eased, 1/4 Top & Bottom Round, Top Bevel, & Double Bevel.

INSTALLATION

Install in accordance with Wagonway Installation Instructions.

WARRANTY

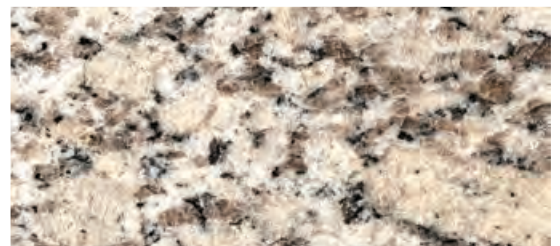
Wagonway product warranty includes up to 7-year light commercial. Please visit www.wagonway.com for full warranty details.

LEAD TIME

The lead time is 90 days from order placement.



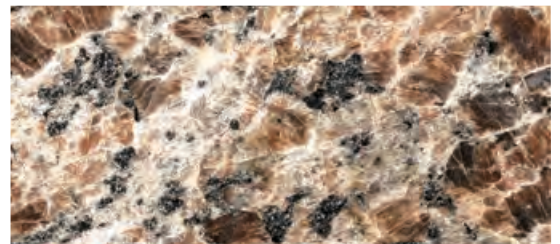
AVAILABLE COLORS



2013 Almond Summit



2010 Greige Slope



2007 Sepia Valley



2001 Sienna Basin



Granite Countertops



UNIVERSAL

The collection is an assortment of colors and patterns to accentuate boldness within our universe. This collection is the eye-catching element that creates a focal point within a space.

DESCRIPTION

Wagonway Granite is finished with exceptional attention to detail. We offer slabs as well as pre-fabricated and fully-fabricated countertops for easy installation. Our granite manufacturing process utilizes the latest technology and adheres to the highest standards of quality control, ensuring that only the finest stone is installed in your space.

THICKNESS OPTIONS

Available in both 2-cm and 3-cm thickness options.

EDGING OPTIONS

Full Bullnose, Demi Bullnose, Eased, 1/4 Top & Bottom Round, Top Bevel, & Double Bevel.

INSTALLATION

Install in accordance with Wagonway Installation Instructions.

WARRANTY

Wagonway product warranty includes up to 7-year light commercial. Please visit www.wagonway.com for full warranty details.

LEAD TIME

The lead time is 90 days from order placement.



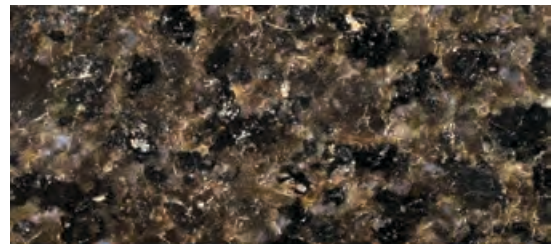
AVAILABLE COLORS



2004 Golden Comet



2009 Mars Red



2003 Black Asteroid



2011 Constellation



Quartz Countertops

[Click here to get
back to index](#)



COASTAL

The collection reflects an array of beige neutrals to mimic sandy beaches. This collection includes flecks to imitate the different types of sand that can be found throughout coastal regions.

DESCRIPTION

Quartz stone is one of nature's hardest minerals, and through revolutionary technology we have created a modern, natural, and luxurious surface that is non-porous, stain resistant, and practically maintenance free. Quartz stones are the ideal and most practical choice for multifamily applications. We offer slabs as well as pre-fabricated and fully-fabricated countertops for easy installation.

COMPOSITION

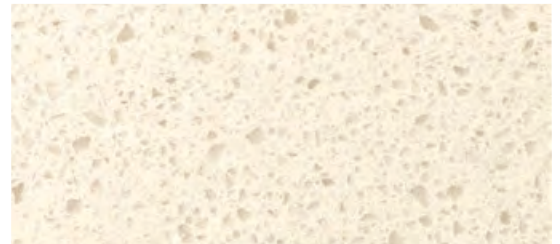
DESCRIPTION	RATIO
Unsaturated Polyester Resin	10% - 15%
Fine Quartz Powder, Titanium Dioxide	~30%
Pigment	3%
Fine Quartz Sand	52% - 57%
Curing Agent, Coupling Agent, Cobalt Water	Trace
Brightening Agent	0.10%



TESTING

DESCRIPTION	STANDARD	RESULT
Absorption	ASTM C97/C97M-15	Pass (0.03%)
Density	ASTM C97/C97M-15	Pass (2287 kg/m3)
Mohr's Hardness	EN 101:1991	Pass (7)
Compressive Strength	ASTM C170/C170M-15B	Pass (Dry: 234 MPa)
Stain Resistance (Polished)	ANSI Z124.6-2007	Pass (R=56, D=0.04-mm)
Chemical Resistance (Polished)	ANSI Z124.6-2007	Pass (Unaffected)
Temperature Resistance	NSF/ANSI 51	Pass (572 deg. F)
Food Suitability	NSF/ANSI 51	Pass
Chemical Emissions	UL 2818-2013	Pass

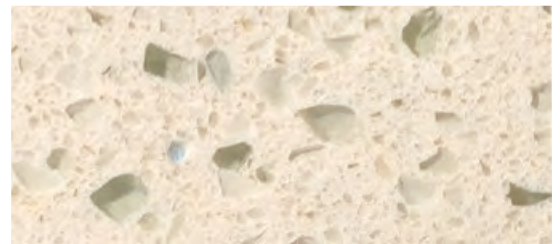
AVAILABLE COLORS



3007 Low Tide White



3005 Sandbar White



3003 Seashore White



3006 High Tide White



Quartz Countertops



COASTAL

STANDARD SIZES

TYPE

Kitchen	108-in x 26-in	96-in x 26-in	78-in x 26-in	70-in x 26-in	48-in x 26-in
Penninsula	108-in x 26-in	96-in x 26-in	78-in x 26-in	70-in x 26-in	48-in x 26-in
Island	108-in x 44-in	108-in x 42-in	96-in x 40-in	96-in x 36-in	72-in x 36-in
Vanity	73-in x 22-in	61-in x 22-in	49-in x 22-in	37-in x 22-in	25-in x 22-in
Large Slab	118-in x 55-in (Standard)		126-in x 63-in (Jumbo)		

THICKNESS OPTIONS

Available in both 2-cm and 3-cm thickness options.

EDGING OPTIONS

Full Bullnose, Demi Bullnose, Eased, 1/4 Top & Bottom Round, Top Bevel, & Double Bevel.

INSTALLATION

Install in accordance with Wagonway Installation Instructions.

WARRANTY

Wagonway product warranty includes up to 7-year light commercial. Please visit www.wagonway.com for full warranty details.

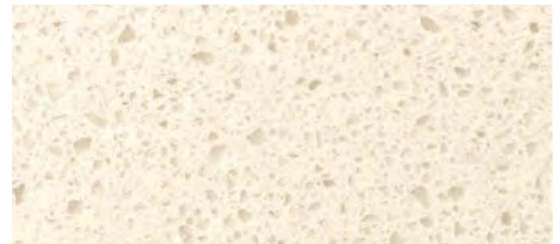
LEAD TIME

The lead time is 90 days from order placement.

BENEFITS

PROPERTY	QUARTZ	GRANITE	MARBLE
Non Porous	Yes	No	No
Scratch Resistant	Yes	Yes	No
Stain Resistant	Yes	No	No
Heat Resistant	Yes	Yes	Yes
Low Maintenance	Yes	No	No
Resistance to Chemicals	Yes	No	No

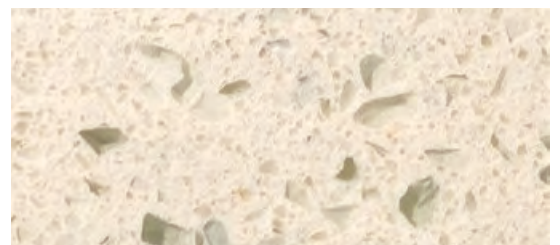
AVAILABLE COLORS



3007 Low Tide White



3005 Sandbar White



3003 Seashore White



3006 High Tide White





MINIMALIST

This collection illustrates cosmopolitan living with its sophistication and classic hues. Pair this collection with softer colors and metal accents to create a welcoming atmosphere.

DESCRIPTION

Quartz stone is one of nature's hardest minerals, and through revolutionary technology we have created a modern, natural, and luxurious surface that is non-porous, stain resistant, and practically maintenance free. Quartz stones are the ideal and most practical choice for multifamily applications. We offer slabs as well as pre-fabricated and fully-fabricated countertops for easy installation.

COMPOSITION

DESCRIPTION	RATIO
Unsaturated Polyester Reson	10% - 15%
Fine Quartz Powder, Titanium Dioxide	~30%
Pigment	3%
Fine Quartz Sand	52% - 57%
Curing Agent, Coupling Agent, Cobalt Water	Trace
Brightening Agent	0.10%



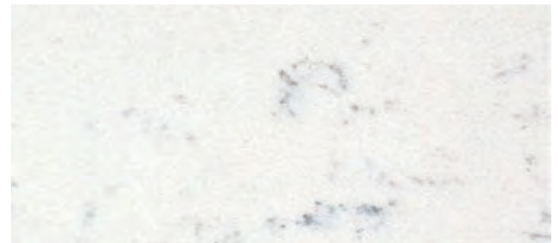
TESTING

DESCRIPTION	STANDARD	RESULT
Absorption	ASTM C97/C97M-15	Pass (0.03%)
Density	ASTM C97/C97M-15	Pass (2287 kg/m3)
Mohr's Hardness	EN 101:1991	Pass (7)
Compressive Strength	ASTM C170/C170M-15B	Pass (Dry: 234 MPa)
Stain Resistance (Polished)	ANSI Z124.6-2007	Pass (R=56, D=0.04-mm)
Chemical Resistance (Polished)	ANSI Z124.6-2007	Pass (Unaffected)
Temperature Resistance	NSF/ANSI 51	Pass (572 deg. F)
Food Suitability	NSF/ANSI 51	Pass
Chemical Emissions	UL 2818-2013	Pass

AVAILABLE COLORS



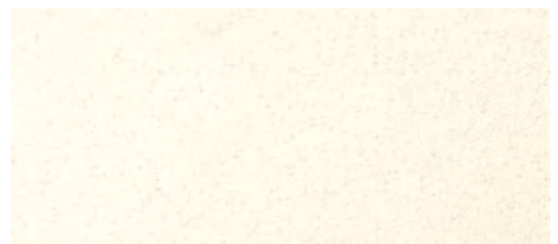
3023 Frost White



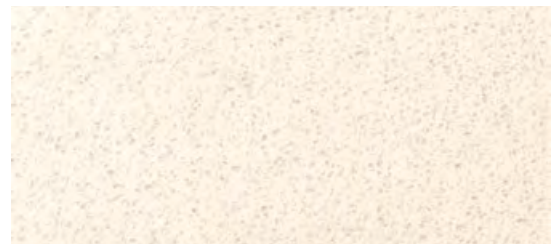
3020 Radiant White



3021 Cloud White



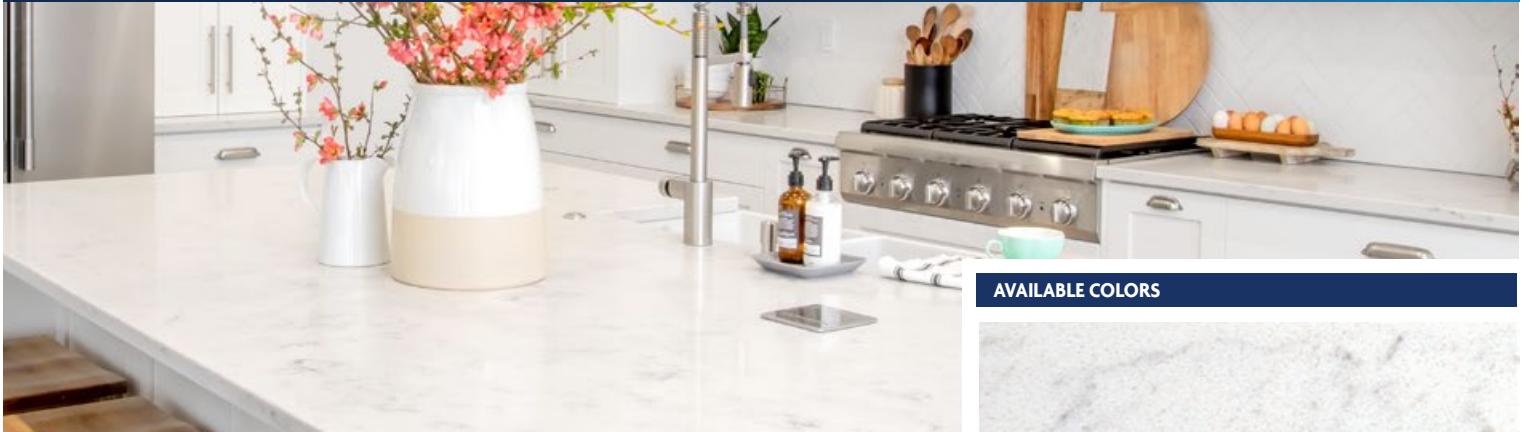
3001 Pearl White



3002 Antique White



Quartz Countertops



MINIMALIST

STANDARD SIZES

TYPE

Kitchen	108-in x 26-in	96-in x 26-in	78-in x 26-in	70-in x 26-in	48-in x 26-in
Penninsula	108-in x 26-in	96-in x 26-in	78-in x 26-in	70-in x 26-in	48-in x 26-in
Island	108-in x 44-in	108-in x 42-in	96-in x 40-in	96-in x 36-in	72-in x 36-in
Vanity	73-in x 22-in	61-in x 22-in	49-in x 22-in	37-in x 22-in	25-in x 22-in
Large Slab	118-in x 55-in (Standard)		126-in x 63-in (Jumbo)		

THICKNESS OPTIONS

Available in both 2-cm and 3-cm thickness options.

EDGING OPTIONS

Full Bullnose, Demi Bullnose, Eased, 1/4 Top & Bottom Round, Top Bevel, & Double Bevel.

INSTALLATION

Install in accordance with Wagonway Installation Instructions.

WARRANTY

Wagonway product warranty includes up to 7-year light commercial. Please visit www.wagonway.com for full warranty details.

LEAD TIME

The lead time is 90 days from order placement.

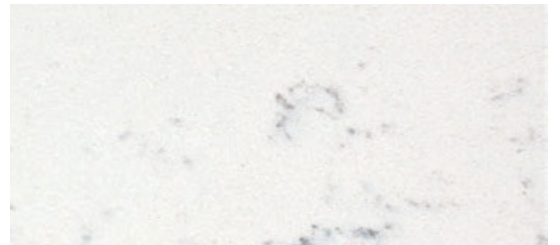
BENEFITS

PROPERTY	QUARTZ	GRANITE	MARBLE
Non Porous	Yes	No	No
Scratch Resistant	Yes	Yes	No
Stain Resistant	Yes	No	No
Heat Resistant	Yes	Yes	Yes
Low Maintenance	Yes	No	No
Resistance to Chemicals	Yes	No	No

AVAILABLE COLORS



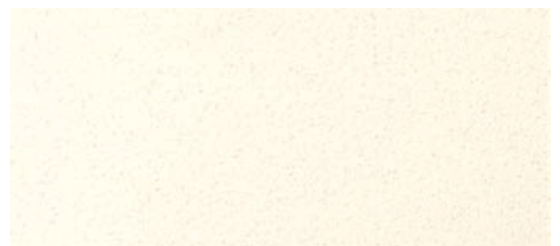
3023 Frost White



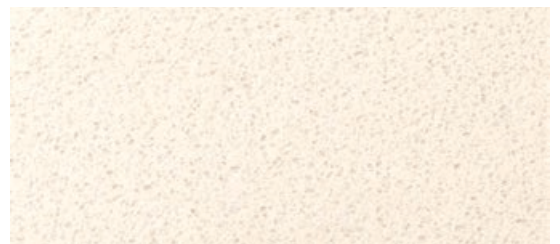
3020 Radiant White



3021 Cloud White



3001 Pearl White



3002 Antique White





RUSTIC

The collection is influenced by warm earthy tones that are found in the mountains. This collection embraces the subdued hues while providing an informal elegance with its simplicity.

DESCRIPTION

Quartz stone is one of nature's hardest minerals, and through revolutionary technology we have created a modern, natural, and luxurious surface that is non-porous, stain resistant, and practically maintenance free. Quartz stones are the ideal and most practical choice for multifamily applications. We offer slabs as well as pre-fabricated and fully-fabricated countertops for easy installation.

COMPOSITION

DESCRIPTION	RATIO
Unsaturated Polyester Resin	10% - 15%
Fine Quartz Powder, Titanium Dioxide	~30%
Pigment	3%
Fine Quartz Sand	52% - 57%
Curing Agent, Coupling Agent, Cobalt Water	Trace
Brightening Agent	0.10%

TESTING

DESCRIPTION	STANDARD	RESULT
Absorption	ASTM C97/C97M-15	Pass (0.03%)
Density	ASTM C97/C97M-15	Pass (2287 kg/m ³)
Mohr's Hardness	EN 101:1991	Pass (7)
Compressive Strength	ASTM C170/C170M-15B	Pass (Dry: 234 MPa)
Stain Resistance (Polished)	ANSI Z124.6-2007	Pass (R=56, D=0.04-mm)
Chemical Resistance (Polished)	ANSI Z124.6-2007	Pass (Unaffected)
Temperature Resistance	NSF/ANSI 51	Pass (572 deg. F)
Food Suitability	NSF/ANSI 51	Pass
Chemical Emissions	UL 2818-2013	Pass

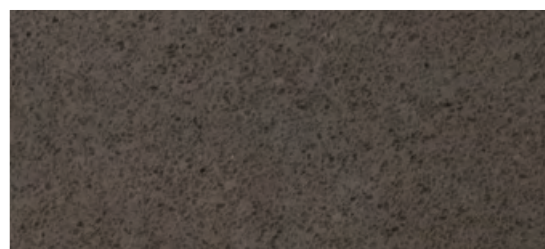
AVAILABLE COLORS



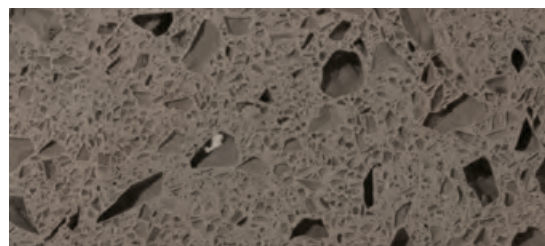
3013 Cliff Tan



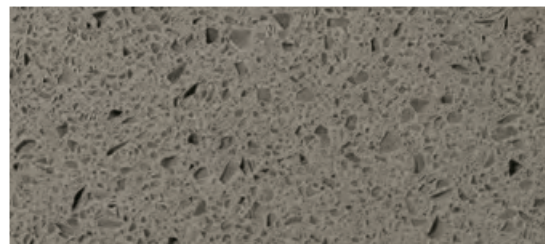
3014 Highland Taupe



3012 Mountain Ridge Brown



3010 Rocky Grey



3011 Peak Grey



Quartz Countertops



RUSTIC

STANDARD SIZES

TYPE

Kitchen	108-in x 26-in	96-in x 26-in	78-in x 26-in	70-in x 26-in	48-in x 26-in
Penninsula	108-in x 26-in	96-in x 26-in	78-in x 26-in	70-in x 26-in	48-in x 26-in
Island	108-in x 44-in	108-in x 42-in	96-in x 40-in	96-in x 36-in	72-in x 36-in
Vanity	73-in x 22-in	61-in x 22-in	49-in x 22-in	37-in x 22-in	25-in x 22-in
Large Slab	118-in x 55-in (Standard)		126-in x 63-in (Jumbo)		

THICKNESS OPTIONS

Available in both 2-cm and 3-cm thickness options.

EDGING OPTIONS

Full Bullnose, Demi Bullnose, Eased, 1/4 Top & Bottom Round, Top Bevel, & Double Bevel.

INSTALLATION

Install in accordance with Wagonway Installation Instructions.

WARRANTY

Wagonway product warranty includes up to 7-year light commercial. Please visit www.wagonway.com for full warranty details.

LEAD TIME

The lead time is 90 days from order placement.

BENEFITS

PROPERTY	QUARTZ	GRANITE	MARBLE
Non Porous	Yes	No	No
Scratch Resistant	Yes	Yes	No
Stain Resistant	Yes	No	No
Heat Resistant	Yes	Yes	Yes
Low Maintenance	Yes	No	No
Resistance to Chemicals	Yes	No	No

AVAILABLE COLORS



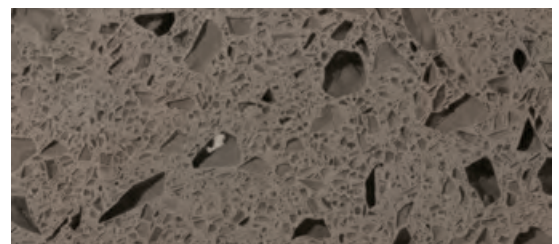
3013 Cliff Tan



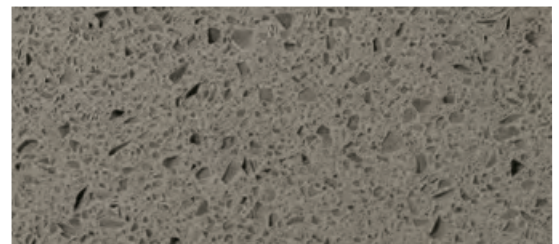
3014 Highland Taupe



3012 Mountain Ridge Brown



3010 Rocky Grey

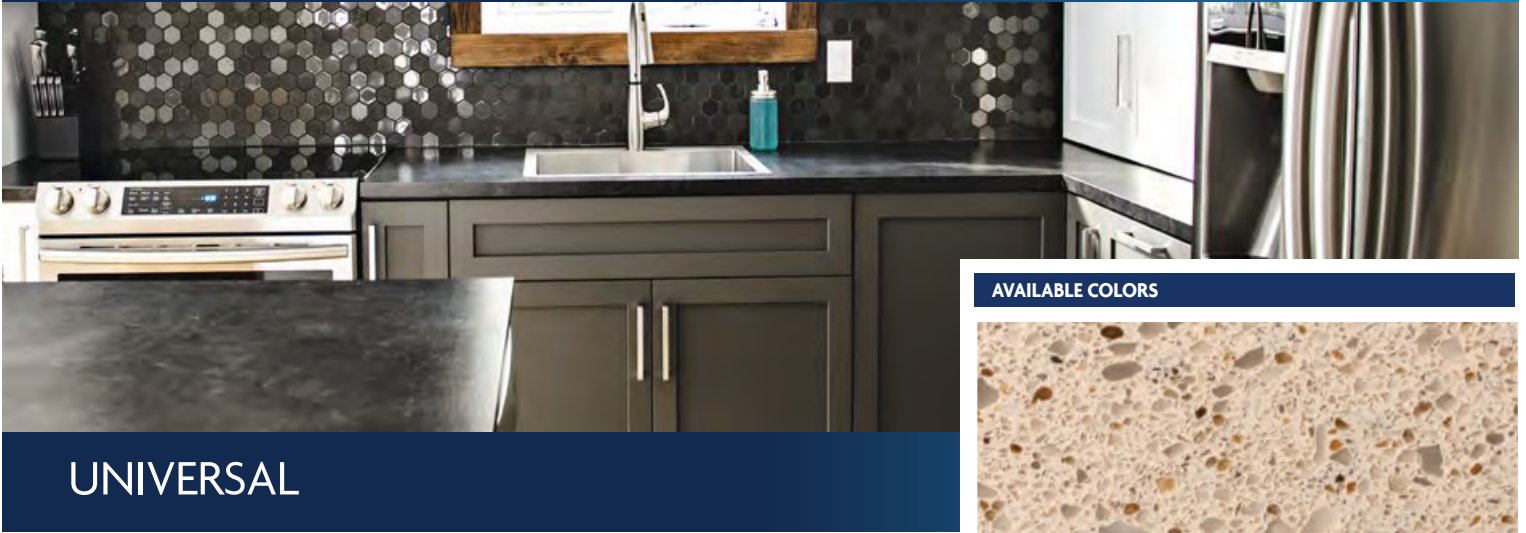


3011 Peak Grey





Quartz Countertops



UNIVERSAL

STANDARD SIZES

TYPE

Kitchen	108-in x 26-in	96-in x 26-in	78-in x 26-in	70-in x 26-in	48-in x 26-in
Penninsula	108-in x 26-in	96-in x 26-in	78-in x 26-in	70-in x 26-in	48-in x 26-in
Island	108-in x 44-in	108-in x 42-in	96-in x 40-in	96-in x 36-in	72-in x 36-in
Vanity	73-in x 22-in	61-in x 22-in	49-in x 22-in	37-in x 22-in	25-in x 22-in
Large Slab	118-in x 55-in (Standard)		126-in x 63-in (Jumbo)		

THICKNESS OPTIONS

Available in both 2-cm and 3-cm thickness options.

EDGING OPTIONS

Full Bullnose, Demi Bullnose, Eased, 1/4 Top & Bottom Round, Top Bevel, & Double Bevel.

INSTALLATION

Install in accordance with Wagonway Installation Instructions.

WARRANTY

Wagonway product warranty includes up to 7-year light commercial. Please visit www.wagonway.com for full warranty details.

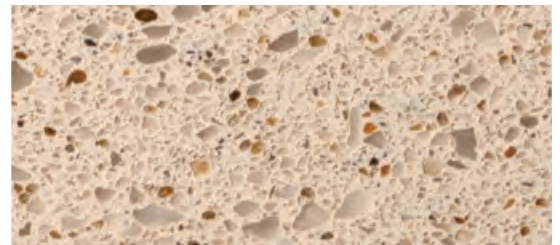
LEAD TIME

The lead time is 90 days from order placement.

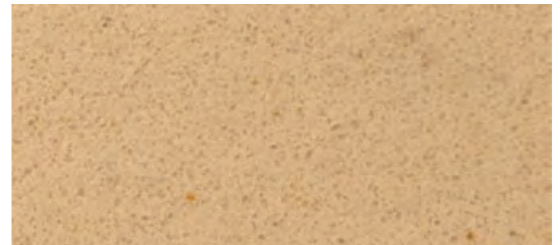
BENEFITS

PROPERTY	QUARTZ	GRANITE	MARBLE
Non Porous	Yes	No	No
Scratch Resistant	Yes	Yes	No
Stain Resistant	Yes	No	No
Heat Resistant	Yes	Yes	Yes
Low Maintenance	Yes	No	No
Resistance to Chemicals	Yes	No	No

AVAILABLE COLORS



3008 Star Cluster



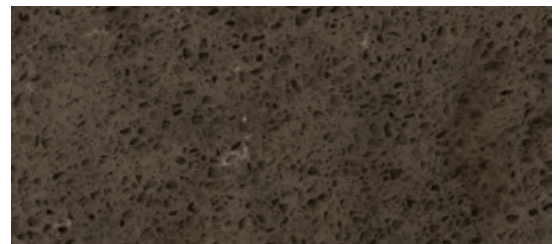
3015 Sunburst



3017 Milky Way



3018 Full Moon

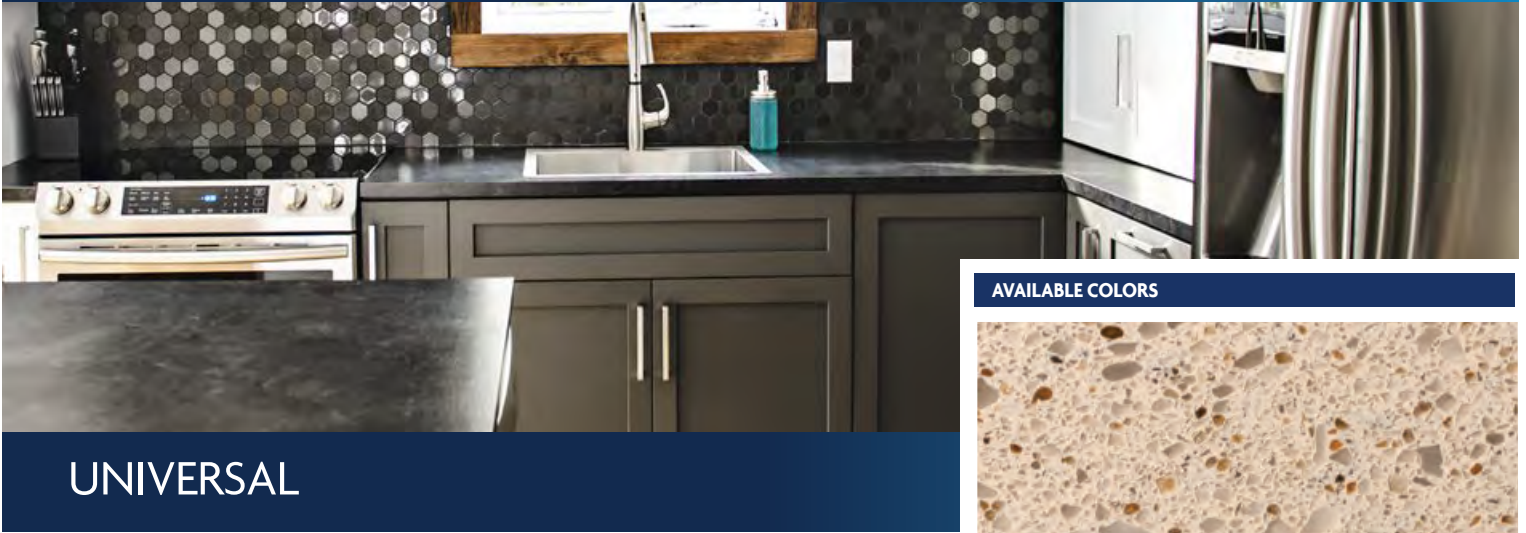


3019 Dark Matter





Quartz Countertops



UNIVERSAL

The collection is an assortment of colors and patterns to accentuate boldness within our universe. This collection is the eye-catching element that creates a focal point within a space.

DESCRIPTION

Quartz stone is one of nature's hardest minerals, and through revolutionary technology we have created a modern, natural, and luxurious surface that is non-porous, stain resistant, and practically maintenance free. Quartz stones are the ideal and most practical choice for multifamily applications. We offer slabs as well as pre-fabricated and fully-fabricated countertops for easy installation.

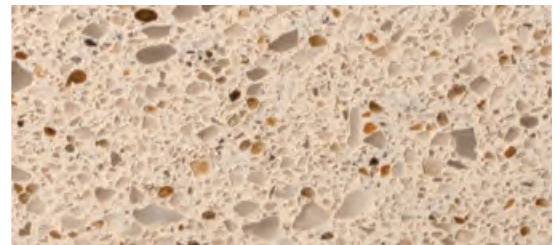
COMPOSITION

DESCRIPTION	RATIO
Unsaturated Polyester Reson	10% - 15%
Fine Quartz Powder, Titanium Dioxide	~30%
Pigment	3%
Fine Quartz Sand	52% - 57%
Curing Agent, Coupling Agent, Cobalt Water	Trace
Brightening Agent	0.10%

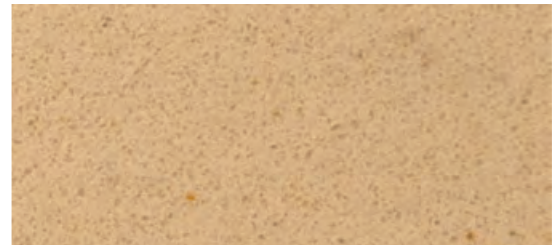
TESTING

DESCRIPTION	STANDARD	RESULT
Absorption	ASTM C97/C97M-15	Pass (0.03%)
Density	ASTM C97/C97M-15	Pass (2287 kg/m3)
Mohr's Hardness	EN 101:1991	Pass (7)
Compressive Strength	ASTM C170/C170M-15B	Pass (Dry: 234 MPa)
Stain Resistance (Polished)	ANSI Z124.6-2007	Pass (R=56, D=0.04-mm)
Chemical Resistance (Polished)	ANSI Z124.6-2007	Pass (Unaffected)
Temperature Resistance	NSF/ANSI 51	Pass (572 deg. F)
Food Suitability	NSF/ANSI 51	Pass
Chemical Emissions	UL 2818-2013	Pass

AVAILABLE COLORS



3008 Star Cluster



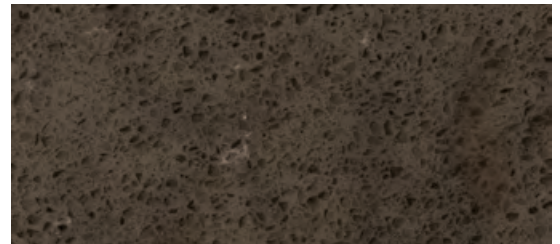
3015 Sunburst



3017 Milky Way



3018 Full Moon



3019 Dark Matter

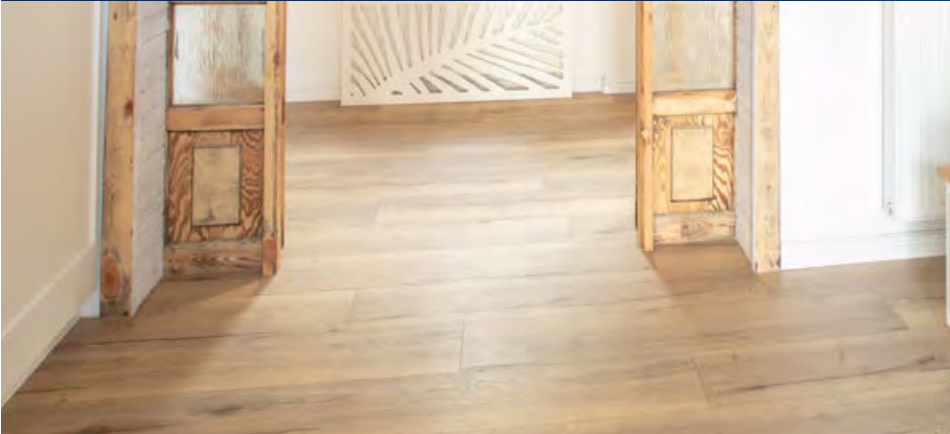


LVP Flooring

[Click here to get
back to index](#)



Vinyl Plank Flooring



BOHEMIAN



This collection is self-expressive and inspired by worldly travels. This collection is carefree and unexpected. Highlight this collection by layers of color and pattern to create an upbeat energy.

VARIATIONS

PROPERTIES	PRIMAFLOOR	ENVIROFLOOR
Composition	100% Virgin Vinyl	30% Recycled Material
Thickness	2-mm & 3-mm	2-mm
Dimensions	6-in x 36-in & 7-in x 48-in	6-in x 36-in & 7-in x 48-in
Wear Layer*	6-mil, 8-mil, & 12-mil	6-mil, 8-mil, & 12-mi

* Wear layer has a UV-polyurethane coating to reduce maintenance.

CERTIFICATION

DESCRIPTION	STANDARD	RESULT
Solid Vinyl Tile	ASTM F1700	Class III, Type B
Fire Response	ASTM E648 & E662	Pass (Class I)
Residual Indentation	EN 433:1994	Pass
Light Resistance	ASTM F1515	Pass
Heat Resistance	ASTM F1514	Pass
Chemical Resistance	ASTM F925	Pass
Flexibility	ASTM F137	Pass
Dimensional Stability	ASTM F2199	Pass
Overall Thickness	ASTM F386	Pass
Abrasion Resistance	ASTM F510	Pass
Sound Insulation**	ISO 7171-2	Pass
Health and Safety	FloorScore, CE, ISO 16000	Pass

** Sound properties will vary depending on the specific flooring and ceiling assembly.

INSTALLATION

Use only Wagonway 1503 or Wagonway 1520 adhesives, or equivalent.

WARRANTY

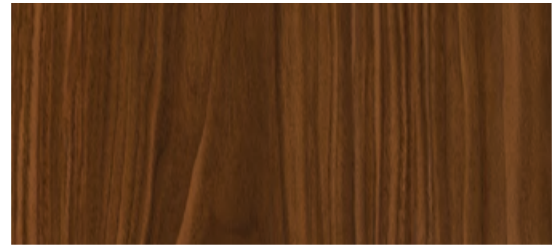
Wagonway provides a 7-year warranty for light commercial applications. Please visit www.wagonway.com for full warranty details.

LEAD TIME

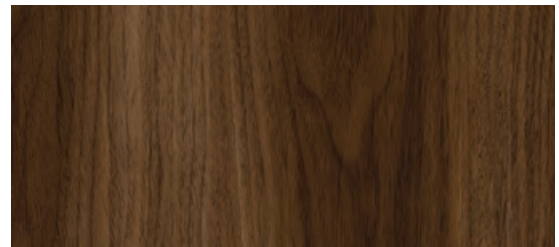
The lead time is 45 days from order placement.

For more information, visit us at www.wagonway.com

AVAILABLE COLORS



1078 Exotic Oak



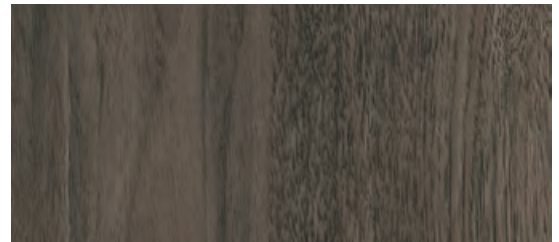
1074 Eclectic Ash



1031 Unconventional Oak



1003 Free Spirit Ash



1068 Vintage Hickory





Vinyl Plank Flooring



FARMHOUSE



This collection characterizes rustic country elegance with a relaxed approach. The collection is inviting with its lighter tones and can be emphasized with the use of linen, stripped patterns and transitional furniture.

VARIATIONS

PROPERTIES	PRIMAFLOOR	ENVIROFLOOR
Composition	100% Virgin Vinyl	30% Recycled Material
Thickness	2-mm & 3-mm	2-mm
Dimensions	6-in x 36-in & 7-in x 48-in	6-in x 36-in & 7-in x 48-in
Wear Layer*	6-mil, 8-mil, & 12-mil	6-mil, 8-mil, & 12-mi

* Wear layer has a UV-polyurethane coating to reduce maintenance.

CERTIFICATION

DESCRIPTION	STANDARD	RESULT
Solid Vinyl Tile	ASTM F1700	Class III, Type B
Fire Response	ASTM E648 & E662	Pass (Class I)
Residual Indentation	EN 433:1994	Pass
Light Resistance	ASTM F1515	Pass
Heat Resistance	ASTM F1514	Pass
Chemical Resistance	ASTM F925	Pass
Flexibility	ASTM F137	Pass
Dimensional Stability	ASTM F2199	Pass
Overall Thickness	ASTM F386	Pass
Abrasion Resistance	ASTM F510	Pass
Sound Insulation**	ISO 7171-2	Pass
Health and Safety	FloorScore, CE, ISO 16000	Pass

** Sound properties will vary depending on the specific flooring and ceiling assembly.

INSTALLATION

Use only Wagonway 1503 or Wagonway 1520 adhesives, or equivalent.

WARRANTY

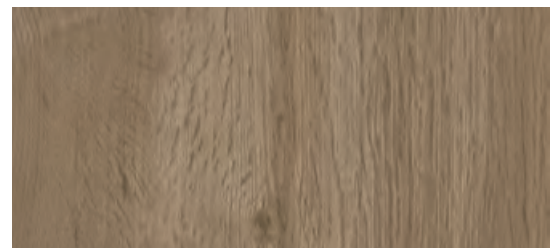
Wagonway provides a 7-year warranty for light commercial applications. Please visit www.wagonway.com for full warranty details.

LEAD TIME

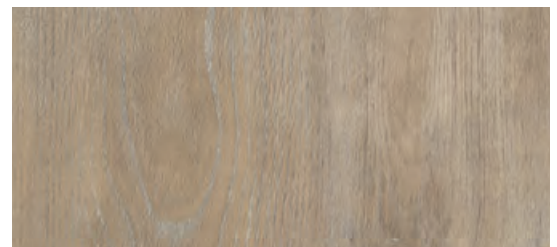
The lead time is 45 days from order placement.

For more information, visit us at www.wagonway.com

AVAILABLE COLORS



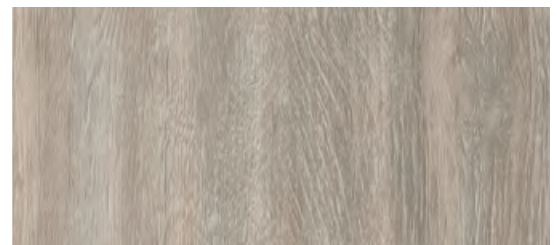
1030 Natural Oak



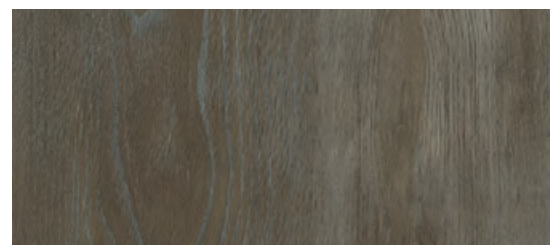
1015 Relaxed Ash



1011 White Oak



1004 Linen Oak



1042 Greige Oak





Vinyl Plank Flooring



INDUSTRIAL



The collection evokes a warehouse vibe with weathered elements. This collection personifies a rugged masculine style that can be complemented with the use of exposed metals, brick, and darker colors.

VARIATIONS

PROPERTIES	PRIMAFLOOR	ENVIROFLOOR
Composition	100% Virgin Vinyl	30% Recycled Material
Thickness	2-mm & 3-mm	2-mm
Dimensions	6-in x 36-in & 7-in x 48-in	6-in x 36-in & 7-in x 48-in
Wear Layer*	6-mil, 8-mil, & 12-mil	6-mil, 8-mil, & 12-mi

* Wear layer has a UV-polyurethane coating to reduce maintenance.

CERTIFICATION

DESCRIPTION	STANDARD	RESULT
Solid Vinyl Tile	ASTM F1700	Class III, Type B
Fire Response	ASTM E648 & E662	Pass (Class I)
Residual Indentation	EN 433:1994	Pass
Light Resistance	ASTM F1515	Pass
Heat Resistance	ASTM F1514	Pass
Chemical Resistance	ASTM F925	Pass
Flexibility	ASTM F137	Pass
Dimensional Stability	ASTM F2199	Pass
Overall Thickness	ASTM F386	Pass
Abrasion Resistance	ASTM F510	Pass
Sound Insulation**	ISO 7171-2	Pass
Health and Safety	FloorScore, CE, ISO 16000	Pass

** Sound properties will vary depending on the specific flooring and ceiling assembly.

INSTALLATION

Use only Wagonway 1503 or Wagonway 1520 adhesives, or equivalent.

WARRANTY

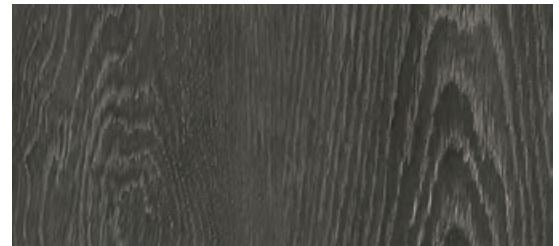
Wagonway provides a 7-year warranty for light commercial applications. Please visit www.wagonway.com for full warranty details.

LEAD TIME

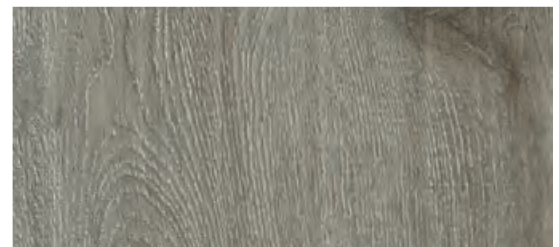
The lead time is 45 days from order placement.

For more information, visit us at www.wagonway.com

AVAILABLE COLORS



1062 Black Steel Oak



1048 Galvanized Grey Ash



1047 Weathered Oak



1044 Copper Ash



1051 Rugged Bronze





Vinyl Plank Flooring



MIDCENTURY MODERN



This collection is influenced by the popular demand of timeless minimalist design. This collection displays natural shapes with clean lines and supports spaces where less is more.

VARIATIONS

PROPERTIES	PRIMAFLOOR	ENVIROFLOOR
Composition	100% Virgin Vinyl	30% Recycled Material
Thickness	2-mm & 3-mm	2-mm
Dimensions	6-in x 36-in & 7-in x 48-in	6-in x 36-in & 7-in x 48-in
Wear Layer*	6-mil, 8-mil, & 12-mil	6-mil, 8-mil, & 12-mi

* Wear layer has a UV-polyurethane coating to reduce maintenance.

CERTIFICATION

DESCRIPTION	STANDARD	RESULT
Solid Vinyl Tile	ASTM F1700	Class III, Type B
Fire Response	ASTM E648 & E662	Pass (Class I)
Residual Indentation	EN 433:1994	Pass
Light Resistance	ASTM F1515	Pass
Heat Resistance	ASTM F1514	Pass
Chemical Resistance	ASTM F925	Pass
Flexibility	ASTM F137	Pass
Dimensional Stability	ASTM F2199	Pass
Overall Thickness	ASTM F386	Pass
Abrasion Resistance	ASTM F510	Pass
Sound Insulation**	ISO 7171-2	Pass
Health and Safety	FloorScore, CE, ISO 16000	Pass

** Sound properties will vary depending on the specific flooring and ceiling assembly.

INSTALLATION

Use only Wagonway 1503 or Wagonway 1520 adhesives, or equivalent.

WARRANTY

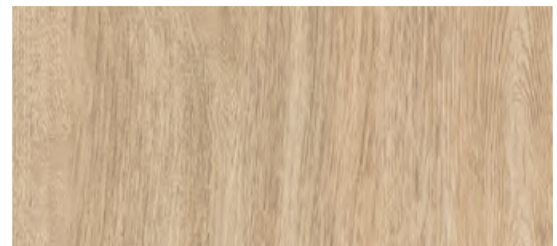
Wagonway provides a 7-year warranty for light commercial applications. Please visit www.wagonway.com for full warranty details.

LEAD TIME

The lead time is 45 days from order placement.

For more information, visit us at www.wagonway.com

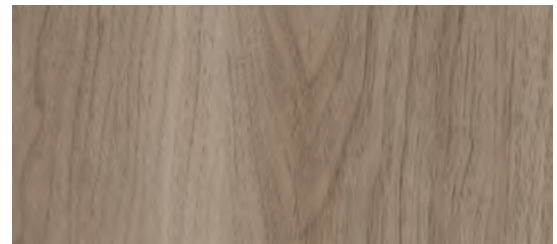
AVAILABLE COLORS



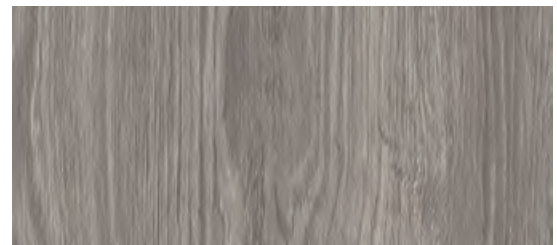
1006 Sleek Walnut



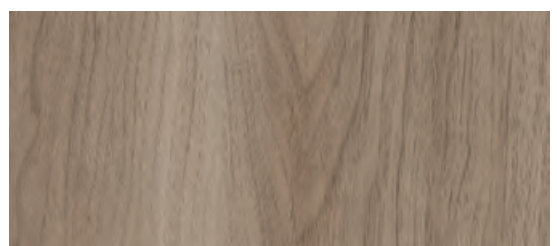
1005 Simple Walnut



1054 Streamlined Birch



1056 Minimal Grey Oak



1098 MOD





Vinyl Plank Flooring



URBAN MODERN



This collection illustrates cosmopolitan living with its sophistication and classic hue. Pair this collection with softer colors and metal accents to create a welcoming atmosphere.

VARIATIONS

PROPERTIES	PRIMAFLOOR	ENVIROFLOOR
Composition	100% Virgin Vinyl	30% Recycled Material
Thickness	2-mm & 3-mm	2-mm
Dimensions	6-in x 36-in & 7-in x 48-in	6-in x 36-in & 7-in x 48-in
Wear Layer*	6-mil, 8-mil, & 12-mil	6-mil, 8-mil, & 12-mil

* Wear layer has a UV-polyurethane coating to reduce maintenance.

CERTIFICATION

DESCRIPTION	STANDARD	RESULT
Solid Vinyl Tile	ASTM F1700	Class III, Type B
Fire Response	ASTM E648 & E662	Pass (Class I)
Residual Indentation	EN 433:1994	Pass
Light Resistance	ASTM F1515	Pass
Heat Resistance	ASTM F1514	Pass
Chemical Resistance	ASTM F925	Pass
Flexibility	ASTM F137	Pass
Dimensional Stability	ASTM F2199	Pass
Overall Thickness	ASTM F386	Pass
Abrasion Resistance	ASTM F510	Pass
Sound Insulation**	ISO 7171-2	Pass
Health and Safety	FloorScore, CE, ISO 16000	Pass

** Sound properties will vary depending on the specific flooring and ceiling assembly.

INSTALLATION

Use only Wagonway 1503 or Wagonway 1520 adhesives, or equivalent.

WARRANTY

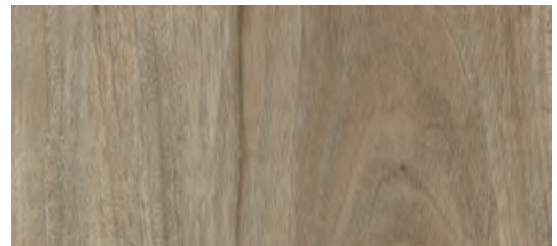
Wagonway provides a 7-year warranty for light commercial applications. Please visit www.wagonway.com for full warranty details.

LEAD TIME

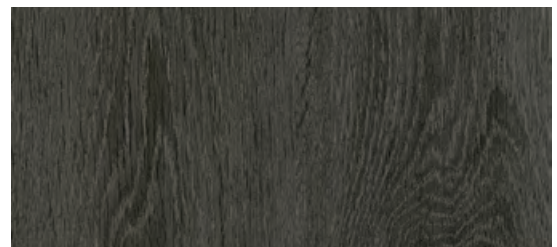
The lead time is 45 days from order placement.

For more information, visit us at www.wagonway.com

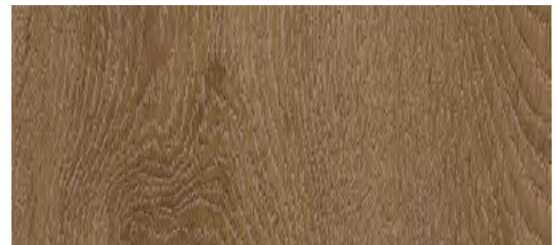
AVAILABLE COLORS



1059 Chic Ash



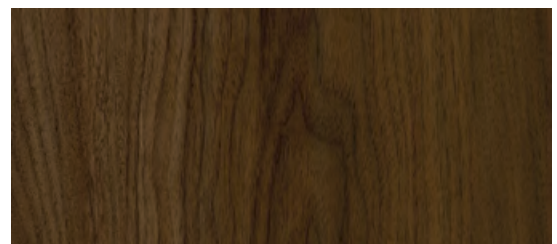
1065 Edgy Pine



1093 Elevated



1092 Market Ash



1076 Statement Ash





Mirrors

[Click here to get
back to index](#)

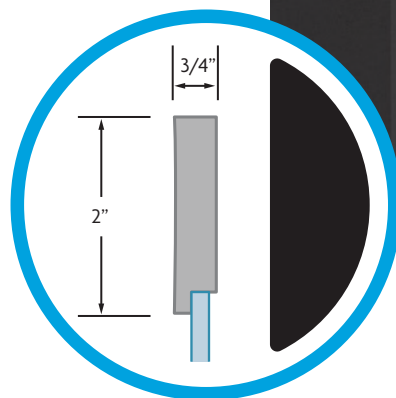


Framed Mirror

Profile A

Flat Frame

- Available in five sizes
- Four individual finishes
- Hardware preset for horizontal or vertical mounting
- Cat 1 Safety backing
- 5/32" Glass thickness



SPECIFICATIONS

OVERALL DIMENSIONS	MODEL NUMBER*	MIRROR DIMENSIONS	MOULDING PROFILE DIMENSIONS	WEIGHT
24" W x 36" L	FM-A2436-PS + (COLOR ID)	20" W x 32" L	2" W x 3/4" D	12 LBS
30" W x 36" L	FM-A3036-PS + (COLOR ID)	26" W x 32" L	2" W x 3/4" D	15 LBS
36" W x 36" L	FM-A3636-PS + (COLOR ID)	32" W x 32" L	2" W x 3/4" D	18 LBS
36" W x 42" L	FM-A3642-PS + (COLOR ID)	32" W x 38" L	2" W x 3/4" D	21 LBS
42" W x 42" L	FM-A4242-PS + (COLOR ID)	38" W x 38" L	2" W x 3/4" D	24 LBS

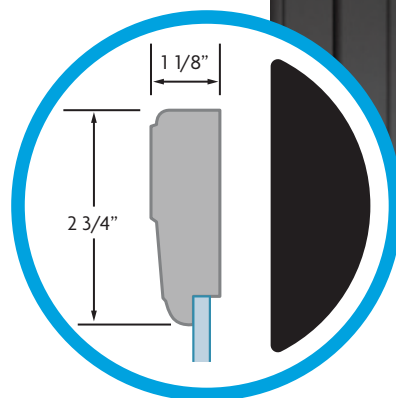
*COLOR ID = BRUSHED NICKEL - 10, BLACK - 20, SILVER -30, VENETIAN BRONZE - 40



Framed Mirror Profile B

Recessed Frame

- Available in five sizes
- Four individual finishes
- Hardware preset for horizontal or vertical mounting
- Cat 1 Safety backing
- 5/32" Glass thickness



SPECIFICATIONS

OVERALL DIMENSIONS	MODEL NUMBER*	MIRROR DIMENSIONS	MOULDING PROFILE DIMENSIONS	WEIGHT
24" W x 36" L	FM-B2436-PS + (COLOR ID)	20" W x 32" L	2" W x 3/4" D	12 LBS
30" W x 36" L	FM-B3036-PS + (COLOR ID)	26" W x 32" L	2" W x 3/4" D	15 LBS
36" W x 36" L	FM-B3636-PS + (COLOR ID)	32" W x 32" L	2" W x 3/4" D	18 LBS
36" W x 42" L	FM-B3642-PS + (COLOR ID)	32" W x 38" L	2" W x 3/4" D	21 LBS
42" W x 42" L	FM-B4242-PS + (COLOR ID)	38" W x 38" L	2" W x 3/4" D	24 LBS

*COLOR ID = BRUSHED NICKEL - 10, BLACK - 20, SILVER -30, VENETIAN BRONZE - 40



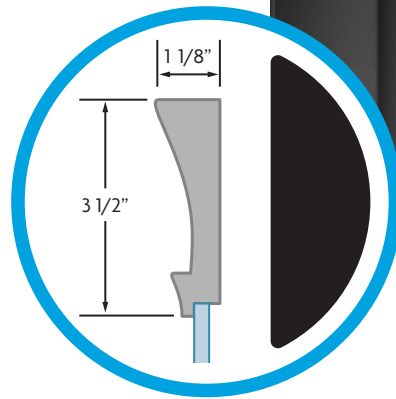
Framed Mirror

Profile C

Recessed Frame



- Available in five sizes
- Four individual finishes
- Hardware preset for horizontal or vertical mounting
- Cat 1 Safety backing
- 5/32" Glass thickness



SPECIFICATIONS

OVERALL DIMENSIONS	MODEL NUMBER*	MIRROR DIMENSIONS	MOULDING PROFILE DIMENSIONS	WEIGHT
24" W x 36" L	FM-C2436-PS + (COLOR ID)	20" W x 32" L	2" W x 3/4" D	12 LBS
30" W x 36" L	FM-C3036-PS + (COLOR ID)	26" W x 32" L	2" W x 3/4" D	15 LBS
36" W x 36" L	FM-C3636-PS + (COLOR ID)	32" W x 32" L	2" W x 3/4" D	18 LBS
36" W x 42" L	FM-C3642-PS + (COLOR ID)	32" W x 38" L	2" W x 3/4" D	21 LBS
42" W x 42" L	FM-C4242-PS + (COLOR ID)	38" W x 38" L	2" W x 3/4" D	24 LBS

*COLOR ID = BRUSHED NICKEL - 10, BLACK - 20, SILVER -30, VENETIAN BRONZE - 40



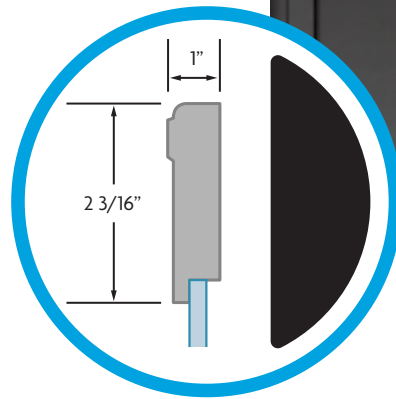
Framed Mirror

Profile D

Recessed Frame



- Available in five sizes
- Four individual finishes
- Hardware preset for horizontal or vertical mounting
- Cat 1 Safety backing
- 5/32" Glass thickness



SPECIFICATIONS

OVERALL DIMENSIONS	MODEL NUMBER*	MIRROR DIMENSIONS	MOULDING PROFILE DIMENSIONS	WEIGHT
24" W x 36" L	FM-D2436-PS + (COLOR ID)	20" W x 32" L	2" W x 3/4" D	12 LBS
30" W x 36" L	FM-D3036-PS + (COLOR ID)	26" W x 32" L	2" W x 3/4" D	15 LBS
36" W x 36" L	FM-D3636-PS + (COLOR ID)	32" W x 32" L	2" W x 3/4" D	18 LBS
36" W x 42" L	FM-D3642-PS + (COLOR ID)	32" W x 38" L	2" W x 3/4" D	21 LBS
42" W x 42" L	FM-D4242-PS + (COLOR ID)	38" W x 38" L	2" W x 3/4" D	24 LBS

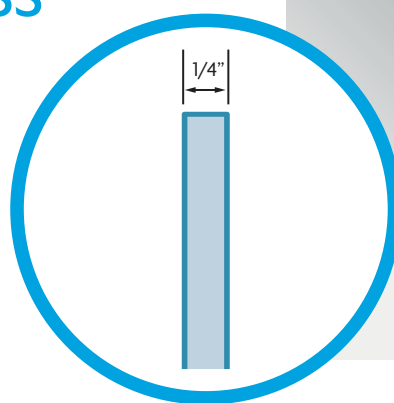
*COLOR ID = BRUSHED NICKEL - 10, BLACK - 20, SILVER - 30, VENETIAN BRONZE - 40



Frameless Mirror

1/4" Glass Thickness

- Available in twelve sizes
- Eased edge all around



SPECIFICATIONS

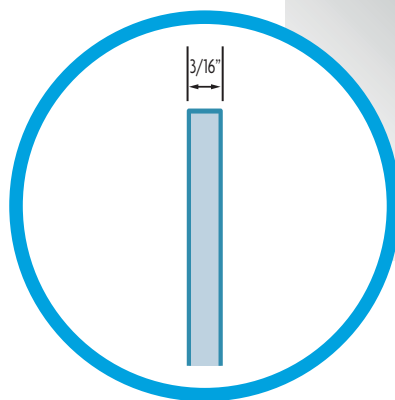
OVERALL DIMENSIONS	MODEL NUMBER*	GLASS THICKNESS	WEIGHT
18" W x 24" L	FL-F1824-4	0.25"	7 LBS
24" W x 24" L	FL-F2424-4	0.25"	9 LBS
24" W x 30" L	FL-F2430-4	0.25"	12 LBS
24" W x 36" L	FL-F2436-4	0.25"	14 LBS
24" W x 48" L	FL-F2448-4	0.25"	19 LBS
30" W x 30" L	FL-F3030-4	0.25"	15 LBS
30" W x 36" L	FL-F3036-4	0.25"	18 LBS
30" W x 40" L	FL-F3040-4	0.25"	19 LBS
36" W x 36" L	FL-F3636-4	0.25"	21 LBS
36" W x 48" L	FL-F3648-4	0.25"	28 LBS
36" W x 56" L	FL-F3656-4	0.25"	33 LBS
36" W x 60" L	FL-F3660-4	0.25"	47 LBS



Frameless Mirror

3/16" Glass Thickness

- Available in nine sizes
- Eased edge all around



SPECIFICATIONS

OVERALL DIMENSIONS	MODEL NUMBER*	GLASS THICKNESS	WEIGHT
14" W x 18" L	FL-F1418-16	0.1875"	4 LBS
24" W x 24" L	FL-F2424-16	0.1875"	8 LBS
24" W x 30" L	FL-F2430-16	0.1875"	10 LBS
24" W x 36" L	FL-F2436-16	0.1875"	12 LBS
30" W x 36" L	FL-F3036-16	0.1875"	15 LBS
30" W x 48" L	FL-F3048-16	0.1875"	20 LBS
36" W x 36" L	FL-F3636-16	0.1875"	18 LBS
36" W x 60" L	FL-F3660-16	0.1875"	30 LBS
48" W x 36" L	FL-F4836-16	0.1875"	24 LBS

Our Website is Key - Sign-Up Now!

Register at wagonway.com and you can start browsing our ever expanding product offering.

Our goal is to make the purchasing process as easy and intuitive as possible.

Every item on this catalogue can be found on our website and in some instances new products will be featured there faster than here.

You can also contact our business development team (details below). Our account representatives will be more than happy to answer any questions you have and help get the products that you need.

High quality products, great prices, and exceptional customer service is what Wagonway is all about.

Contact information:

Mailing address:

Wagonway
200 Post Oak Blvd Suite 1000
Houston, TX 77056

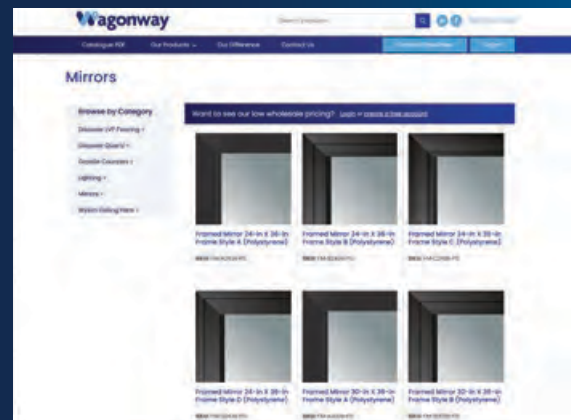
Phone:

(832) 553-3649

Fax:

(832) 553-3650

www.wagonway.com





2200 Post Oak Blvd
Suite 1000 Houston,
TX 77056
www.wagonway.com