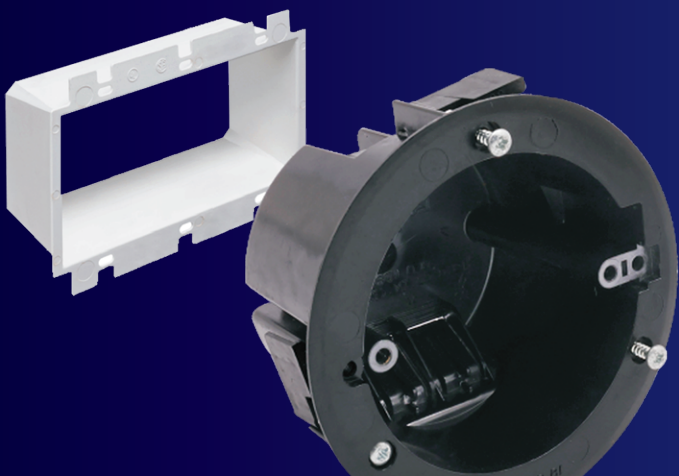


# Wagonway

Electrical Boxes Catalog

Contract Pricing 2022





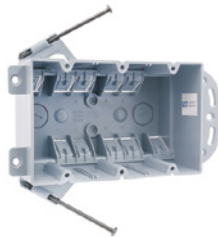
## One-Gang

Part No.	Cubic Capacity	Description	Size ( L x W x D)
E20003	18 cu in Four Integral Clamps	Switch/Outlet Box; New Work; 1 Gang; Captive Nail And Bracket Mounting; For Use With Non-Metallic Sheathed Cable.	3-3/4" X 2-1/4" X 2-7/8"



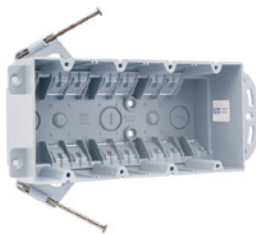
## Two-Gang

Part No.	Cubic Capacity	Description	Size ( L x W x D)
E20005	32 cu in Four Integral Clamps	Switch/Outlet Box; New Work; 2 Gang; Captive Nail And Bracket Mounting; For Use With Non-Metallic Sheathed Cable.	4" X 3-3/4" X 3"



## Three-Gang

Part No.	Cubic Capacity	Description	Size ( L x W x D)
E20006	44 cu in Ten Integral Clamps	Switch/Outlet Box; New Work; 3 Gang; Captive Nail And Bracket Mounting; For Use With Non-Metallic Sheathed Cable.	5-7/8" X 3-3/4" X 2-3/4"



## Four-Gang

Part No.	Cubic Capacity	Description	Size ( L x W x D)
E20007	55 cu in Fourteen Integral Clamps	Switch/Outlet Box; New Work; 4 Gang; Captive Nail And Bracket Mounting; For Use With Non-Metallic Sheathed Cable.	7-7/10" X 3-3/4" X 2-3/4"



## Round

Part No.	Cubic Capacity	Description	Size ( Dia x D)
E20001	20 cu in Six Integral Clamps	Round Ceiling/Fixture Box; New Work; Captive Nail And Bracket Mounting; For Use With Non-Metallic Sheathed Cable.	4" Dia X 2-1/4"

## Bar Hanger: 14.25" - 22.5"

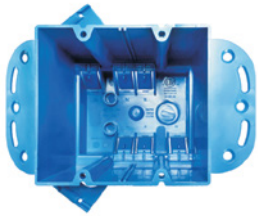


Part No.	Cubic Capacity	Description	Size ( Dia x D)
E20009	20 cu in Six Integral Clamps	Round Ceiling/Fixture Box with; 14.25"-22.5" Bar Hanger; Captive Nail And Bracket Mounting; For Use With Non-Metallic Sheathed Cable.	4" Dia X 2-1/4"



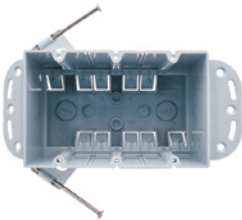
## One-Gang

Part No.	Cubic Capacity	Description	Size ( L x W x D)
E20010	23 cu in Four Integral Clamps	Deep Switch/Outlet Box; New Work; 1 Gang; Captive Nail And Bracket Mounting; For Use With Non-Metallic Sheathed Cable.	3-3/4" X 2-1/4" X 3-1/2"



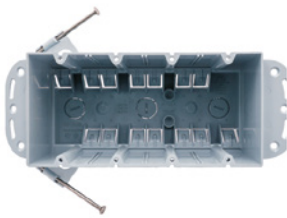
## Two-Gang

Part No.	Cubic Capacity	Description	Size ( L x W x D)
E20011	44 cu in Six Integral Clamps	Deep Switch/Outlet Box; New Work; 2 Gang; Captive Nail And Bracket Mounting; For Use With Non-Metallic Sheathed Cable.	4" X 3-3/4" X 4"



## Three-Gang

Part No.	Cubic Capacity	Description	Size ( L x W x D)
E20012	68 cu in Ten Integral Clamps	Deep Switch/Outlet Box; New Work; 3 Gang; Captive Nail And Bracket Mounting; For Use With Non-Metallic Sheathed Cable.	5-7/8" X 3-3/4" X 4"



## Four-Gang

Part No.	Cubic Capacity	Description	Size ( L x W x D)
E20013	87 cu in Fourteen Integral Clamps	Deep Switch/Outlet Box; New Work; Captive Nail And Bracket Mounting; For Use With Non-Metallic Sheathed Cable.	7-7/10" X 3-3/4" X 4"



## One-Gang

Part No.	Cubic Capacity	Description	Size ( L x W x D)
E20014	20.3 cu in Four Integral Clamps	Deep Switch/Outlet Box; 1 Gang; Steel Stud Bracket & Wire Clamps; For Use With Non-Metallic Sheathed Cable.	3-3/4" X 2-1/4" X 3-1/10"



## One-Gang

Part No.	Cubic Capacity	Description	Size ( L x W x D)
E20015	18 cu in Four Integral Clamps	Switch/Outlet Box; 1 Gang; For Use With Non-Metallic Sheathed Cable.	3-3/4" X 2-1/4" X 2-3/4"



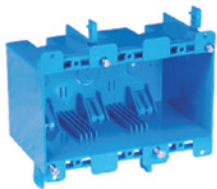
### One-Gang

Part No.	Cubic Capacity	Description	Size ( L x W x D)
E20016	14 cu in Four Integral Clamps	Switch/Outlet Box; Old Work; 1 Gang; Swing Clamp And Ears Mounting; For Use With Non-Metallic Sheathed Cable. Suitable For Masonry Walls.	3-3/4" X 2-1/4" X 2-3/4"



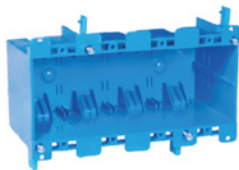
### Two-Gang

Part No.	Cubic Capacity	Description	Size ( L x W x D)
E20017	25 cu in Six Integral Clamps	Switch/Outlet Box; Old Work; 2 Gang; Swing Clamp And Ears Mounting; For Use With Non-Metallic Sheathed Cable. Suitable For Masonry Walls.	4" X 3-3/4" X 2-3/4"



### Three-Gang

Part No.	Cubic Capacity	Description	Size ( L x W x D)
E20026	38 cu in Ten Integral Clamps	Switch/Outlet Box; Old Work; 4 Gang; Swing Clamp And Ears Mounting; For Use With Non-Metallic Sheathed Cable. Suitable For Masonry Walls.	5-7/10" X 3-3/4" X 2-3/4"



### Four-Gang

Part No.	Cubic Capacity	Description	Size ( L x W x D)
E20018	69.8 cu in Fourteen Integral Clamps	Switch/Outlet Box; Old Work; 4 Gang; Swing Clamp And Ears Mounting; For Use With Non-Metallic Sheathed Cable. Suitable For Masonry Walls.	7-7/10" X 3-3/4" X 3-1/2"



### Round

Part No.	Cubic Capacity	Description	Size ( Dia x D)
E20019	18 cu in Six Integral Clamps	Round Ceiling/Fixture Box; Old Work; Captive Nail And Bracket Mounting; For Use With Non-Metallic Sheathed Cable.	4-1/4" Dia X 2-1/2"



### One-Gang

Part No.	Cubic Capacity	Description	Size ( L x W x D)
E20020	20 cu in Four Integral Clamps	Switch/Outlet Box; Old Work; 1 Gang; Swing Clamp And Ears Mounting; For Use With Non-Metallic Sheathed Cable. Suitable For Masonry Walls.	4-3/10" X 2-1/4" X 3-1/4"



## One-Gang

Part No.	Cubic Capacity	Description	Size ( L x W x D)
E20021	18 cu in Four Knockouts	Deep Switch/Outlet Box; New Work; 1 Gang; Captive Nail And Bracket Mounting; For Use With Non-Metallic Sheathed Cable.	3-3/4" X 2-1/4" X 2-7/8"



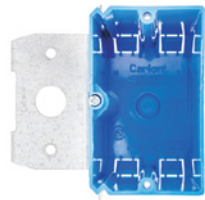
## One-Gang

Part No.	Cubic Capacity	Description	Size ( L x W x D)
E20002	20 cu in Four Knockouts	Deep Switch/Outlet Box; New Work; 1 Gang; Captive Nail And Bracket Mounting; For Use With Non-Metallic Sheathed Cable.	3-3/4" X 2-1/4" X 3-1/4"



## One-Gang

Part No.	Cubic Capacity	Description	Size ( L x W x D)
E20004	23 cu in Four Knockouts	Deep Switch/Outlet Box; New Work; 1 Gang; Captive Nail And Bracket Mounting; For Use With Non-Metallic Sheathed Cable.	3-3/4" X 2-1/4" X 3-1/2"



## One-Gang

Part No.	Cubic Capacity	Description	Size ( L x W x D)
E20022	21 cu in Four Knockouts	Deep Switch/Outlet Box; 1 Gang; Adjustable Steel Bracket & Wire Clamps; For Use With Non-Metallic Sheathed Cable.	3-3/4" X 2-1/4" X 3-3/10"



## Round

Part No.	Cubic Capacity	Description	Size ( Dia x D)
E20008	20 cu in Grounding Six Integral Clamps	Round Ceiling/Fixture Box with Grounding; New Work; Captive Nail And Bracket Mounting; For Use With Non-Metallic Sheathed Cable.	4" Dia X 2-1/4"



## Bar Hanger: 16"-24"

Part No.	Cubic Capacity	Description	Size ( Dia x D)
E20023	20 cu in Four Integral Clamps	Round Ceiling/Fixture Box with; 16"-24" Bar Hanger; Captive Nail And Bracket Mounting; For Use With Non-Metallic Sheathed Cable.	4" Dia X 2-1/4"

## Bar Hanger: 16"-24"



Part No.	Cubic Capacity	Description	Size ( Dia x D)
E20024	20 cu in Six Integral Clamps	Round Ceiling/Fixture Box with; 16"-24" Bar Hanger; Captive Nail And Bracket Mounting; For Use With Non-Metallic Sheathed Cable.	4" Dia X 2-1/4"



## Ceiling Box

Part No.	Cubic Capacity	Description	Size ( L x W x D)
E20025	13.4 cu in Two Knockouts	Fits any ceiling fan up to 70 lbs. or lighting fixture up to 150 lbs. electrical box measures 4 in. high by 1/2" deep; 13.4 cu in. capacity	4" X 1/2" X 4"



## One-Gang

Part No.	Description	Size ( L x W x D )
E20026	Single gang electrical outlet box extender.	2.43" X 4.28" X 1.85"



## Two-Gang

Part No.	Description	Size ( L x W x D )
E20027	Two gang electrical outlet box extender.	2.32" X 4.28" X 1.85"



## Three-Gang

Part No.	Description	Size ( L x W x D )
E20028	Three gang electrical outlet box extender.	6.13" X 4.28" X 1.85"



## Four-Gang

Part No.	Description	Size ( L x W x D )
E20029	Four gang electrical outlet box extender.	6.13" X 4.28" X 1.85"



## Round

Part No.	Description	Size ( L x W x D )
E20030	Ceiling box extender/ Set back ceilings.	4.92" X 4.92" X 1.50"